



COVENANT HOUSE

IND2237C - DESIGN STUDIO 3

SKYLAR GREENBERG

FALL 2023





TABLE OF CONTENTS

3 : DESIGN CONCEPT AND IMAGES

4: FURNITURE PLAN

**5: REFLECTED CEILING PLAN AND
LIGHTING SELECTIONS**

6-8: FURNITURE AND FINISH SELECTIONS

9: SUSTAINABLE FEATURES

10-11: INTERIOR ELEVATIONS

12-13: MILLWORK ELEVATIONS

14: QUESTIONS?

15: GET IN CONTACT

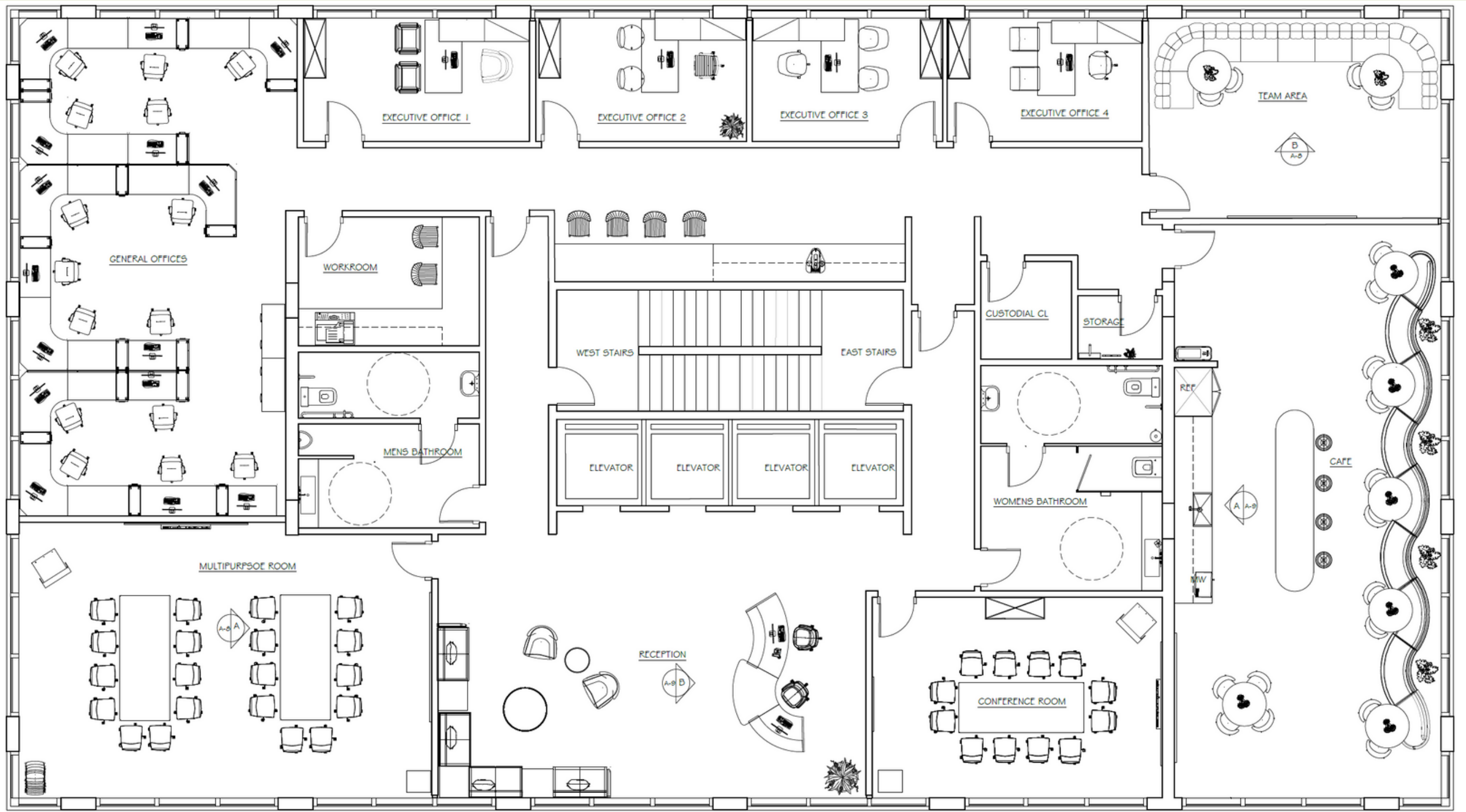
DESIGN CONCEPT



By infusing elements that reflect Covenant House's mission, values, and dedication to support homeless youth. Incorporating flexible work areas for not only staff members, but for visitors, is ideal. A comfortable, yet inviting atmosphere is utilized using bright colors and lots of furniture options scattered throughout each space, giving off a feeling of happiness, and motivation. Inclusive design needs, technology integration, quiet zones for focus work, are a part of this design aspect to help everyone come together to have a successful work space. By including nature, such as plants, and other natural material in the furniture and ceiling designs, it promotes individuals well-being and connection to the environment within the office. These are all integrated in the design to help be supportive and inspiring within the environment for those working toward the betterment of homeless youth.



FURNITURE PLAN



FURNITURE PLAN

1/4" = 1'-0"



REFLECTED CEILING PLAN & LIGHTING SELECTIONS



LED Recessed



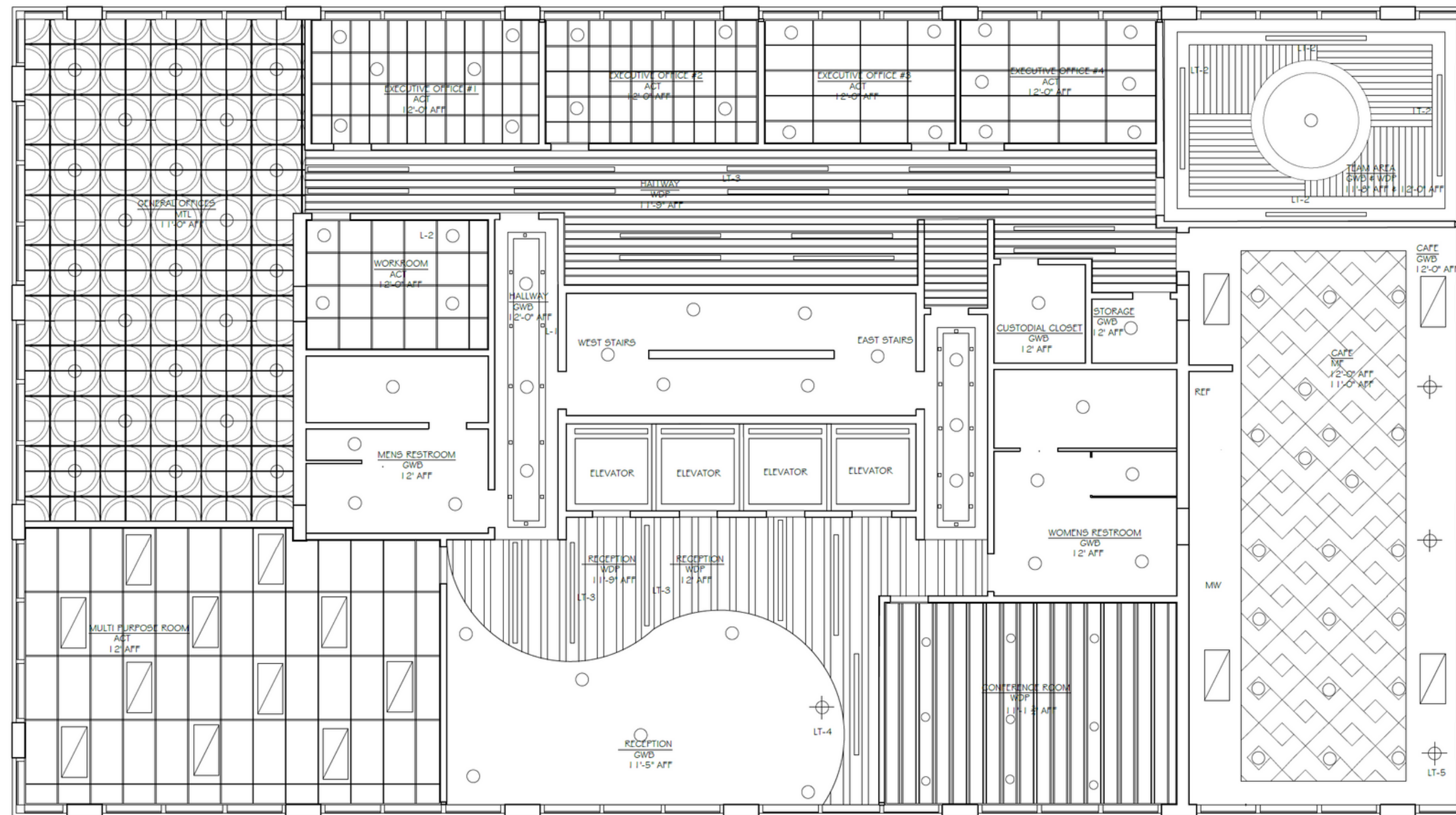
LED Downlight



LED Narrow



Linear Florescent



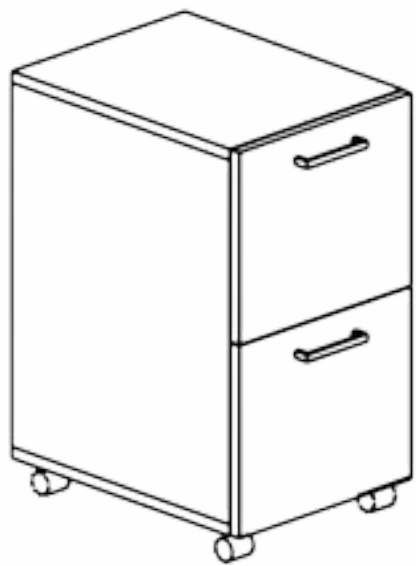
Above Reception Desk



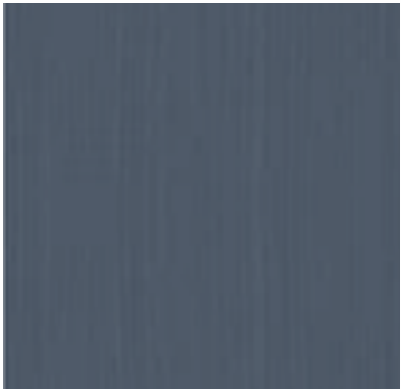
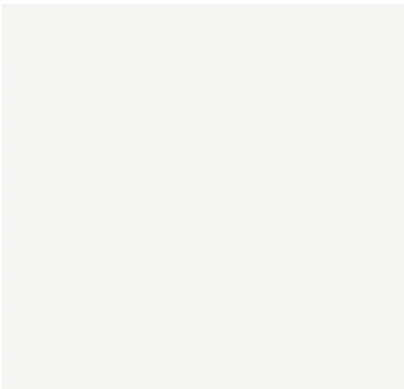
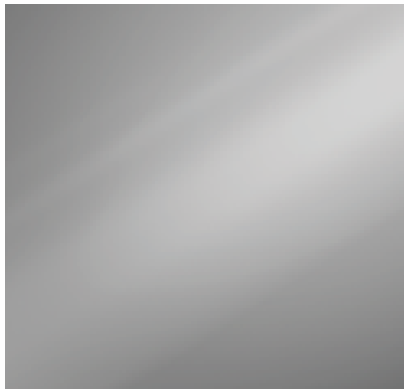
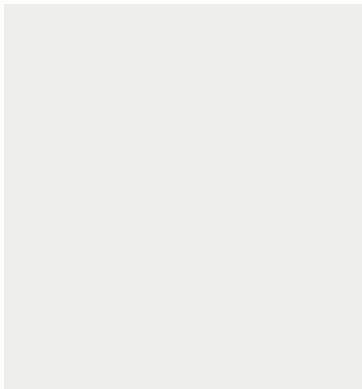
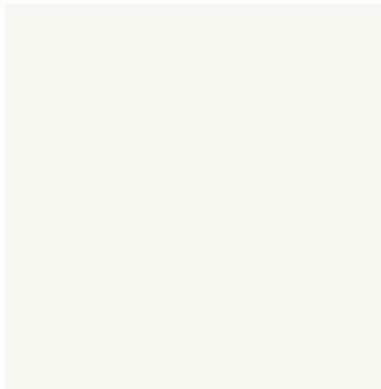
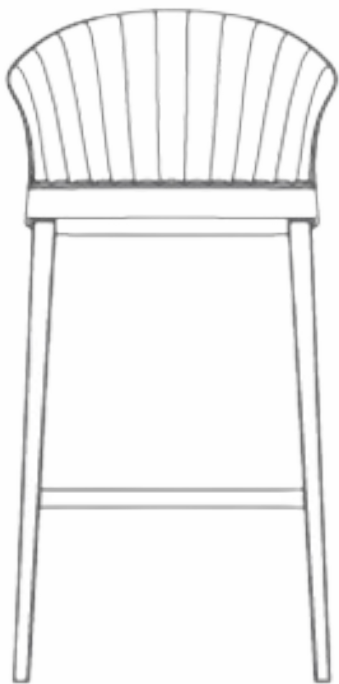
In Cafe above 3 tables

FURNITURE AND FINISH SELECTIONS

GENERAL OFFICES

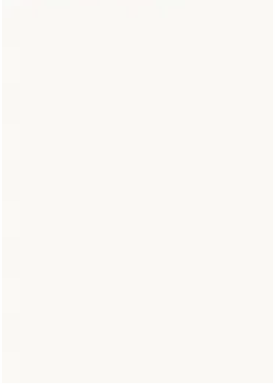
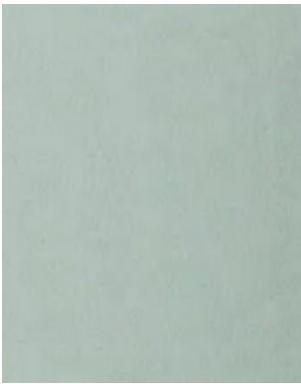
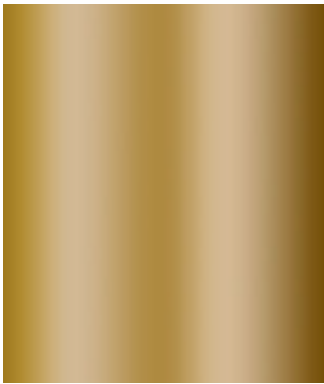
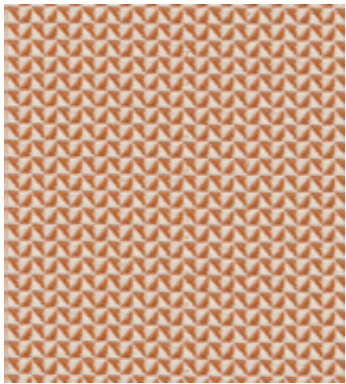


WORKROOM



FURNITURE AND FINISH SELECTIONS

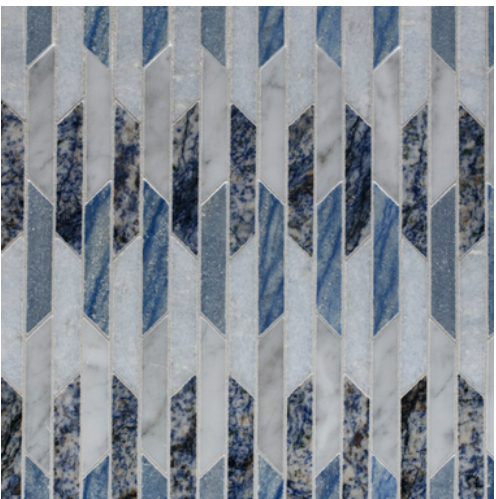
RECEPTION



WOMENS BR

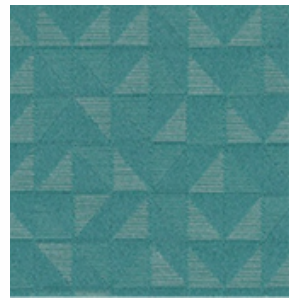
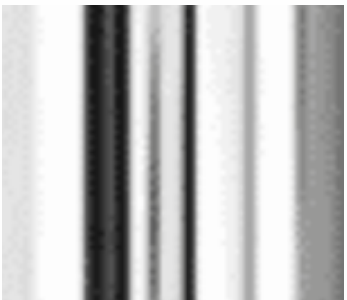


MENS BR



FURNITURE AND FINISH SELECTIONS

EXECUTIVE OFFICES



SUSTAINABLE FEATURES

DESIGN FOR WASTE REDUCTION

*Using reclaimed wood, recycled metal

DESIGN FOR ENERGY EFFICIENCY

*Having lots of natural light throughout the office

DESIGN FOR LONGEVITY

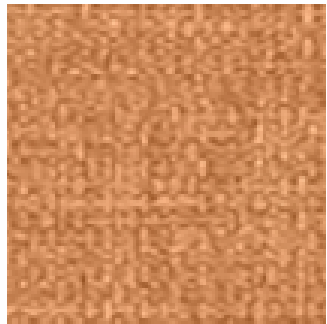
*Having durable and functional spaces by utilizing products that can easily be changed and moved without renovating



INTERIOR ELEVATIONS

STACKING CHAIR

FABRIC



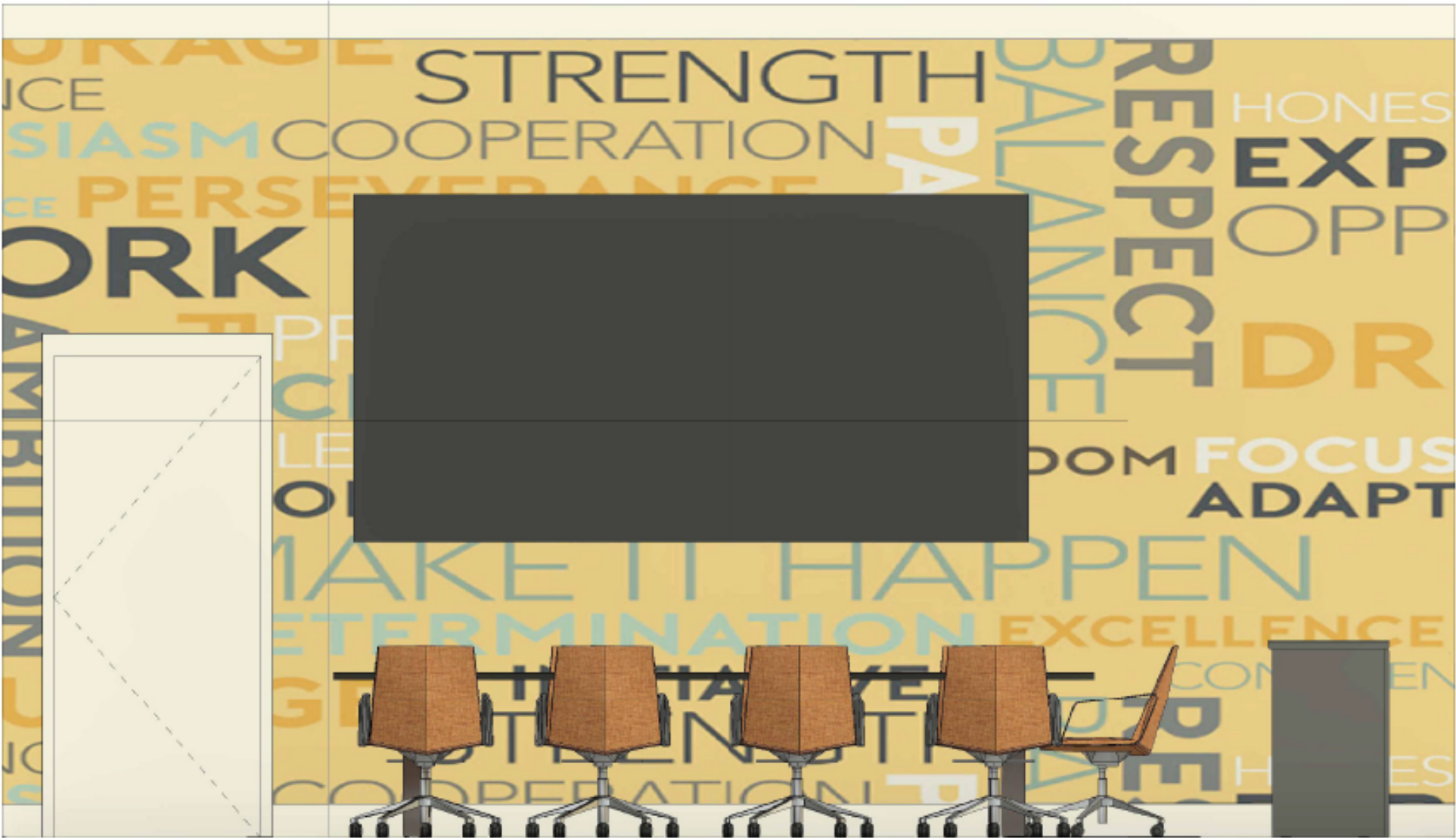
PODIUM

SOLID SURFACE



STORAGE CART

SOLID SURFACE



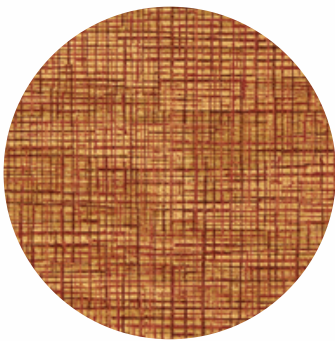
MULTI PURPOSE ROOM ELEVATION A

1/2" = 1'-0"

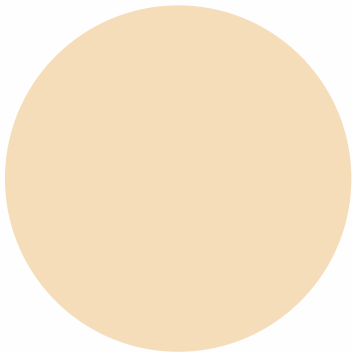
NORTH



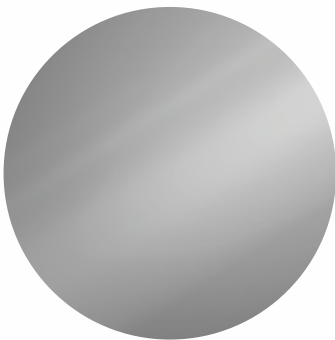
FINISHES



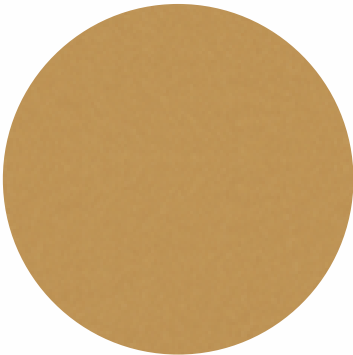
CHAIR



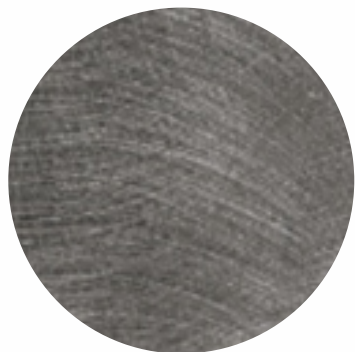
PAINT



CHAIR



TABLE



TABLE

INTERIOR ELEVATIONS



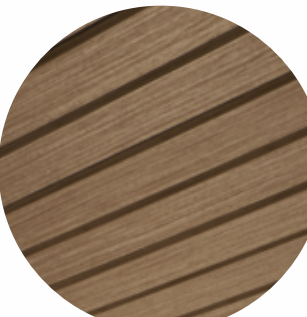
WALLCOVERING



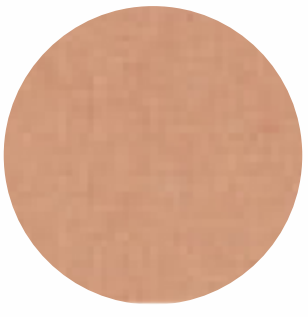
FLOORING



PAINT



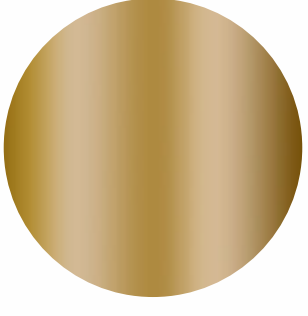
CEILING



SOFA FABRIC



WOOD TABLE



METAL LEGS



CHAIR FABRIC

TEAM ROOM ELEVATION B

$\frac{1}{2}'' = 1'-0''$



MILLWORK ELEVATIONS



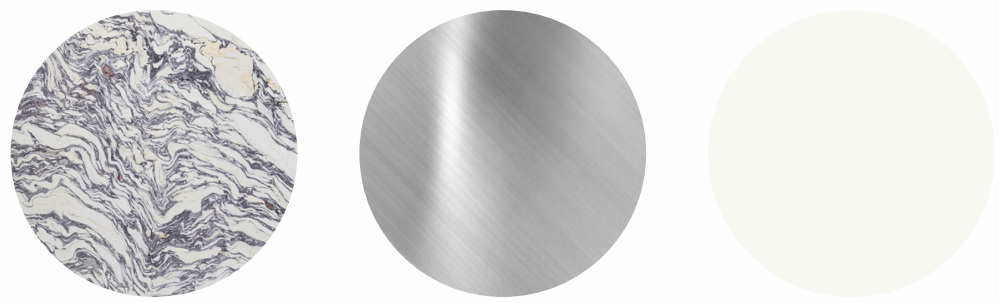
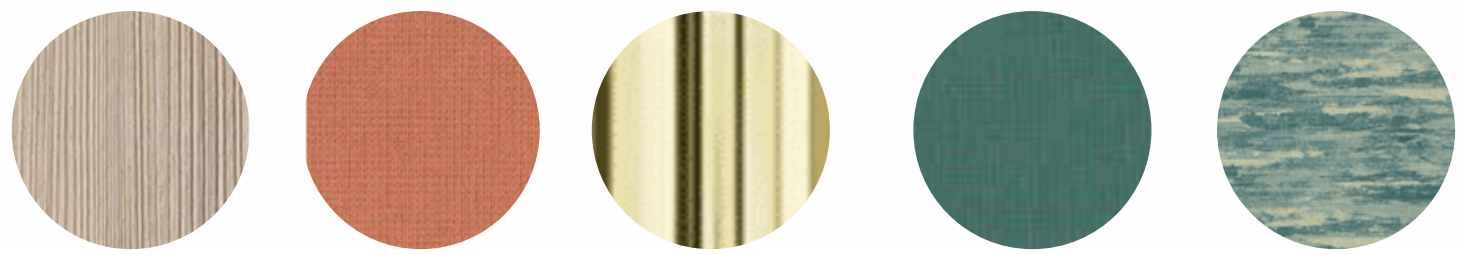
ACCENT WALL



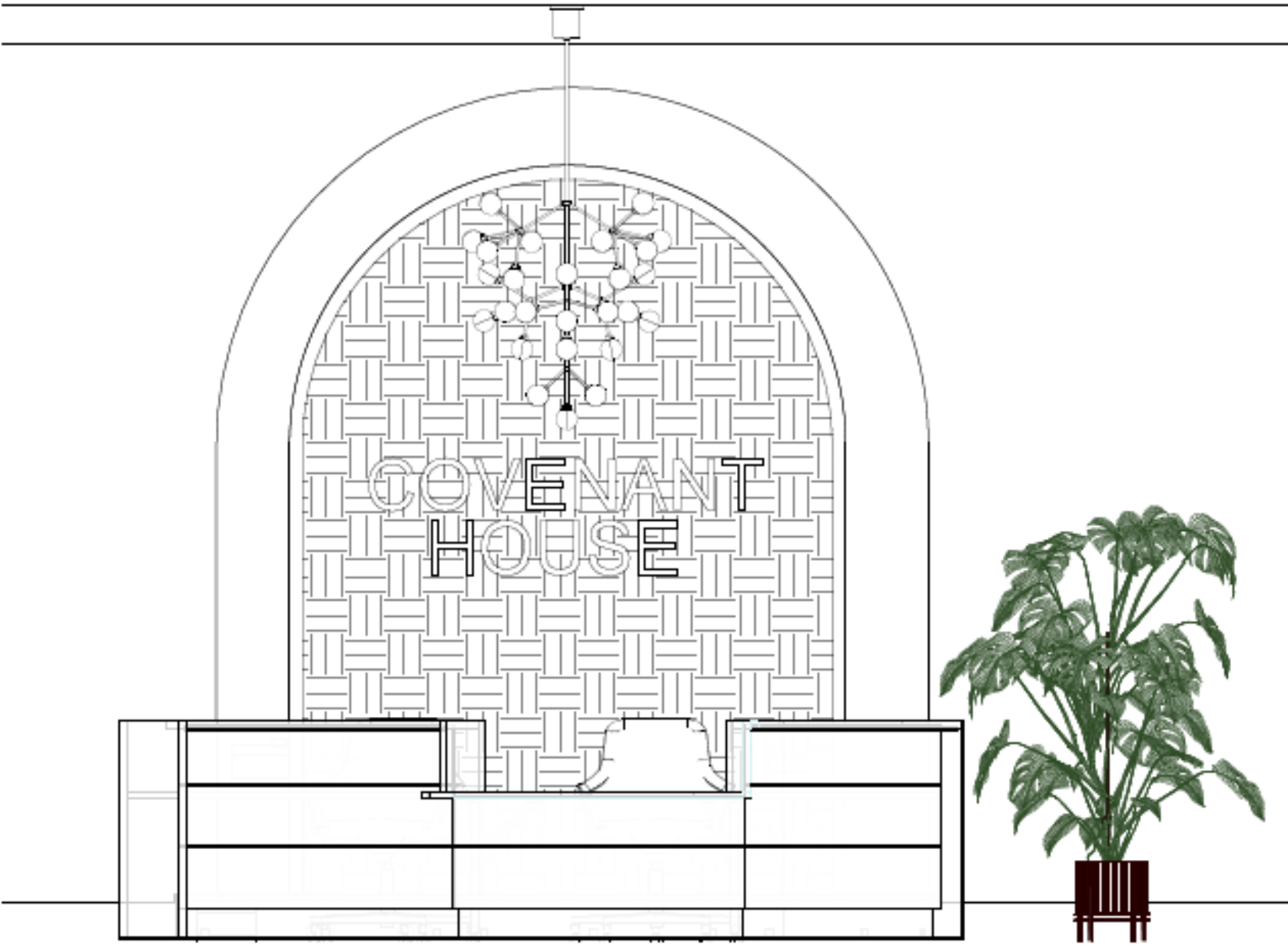
CAFE MILLWORK A

1/2" = 1'-0"

NORTH



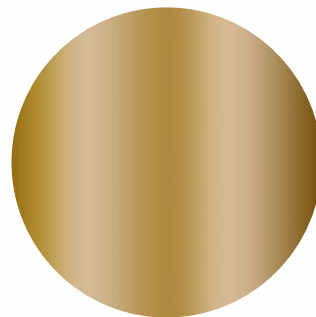
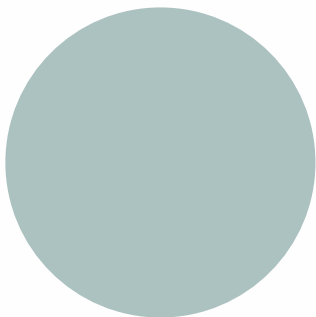
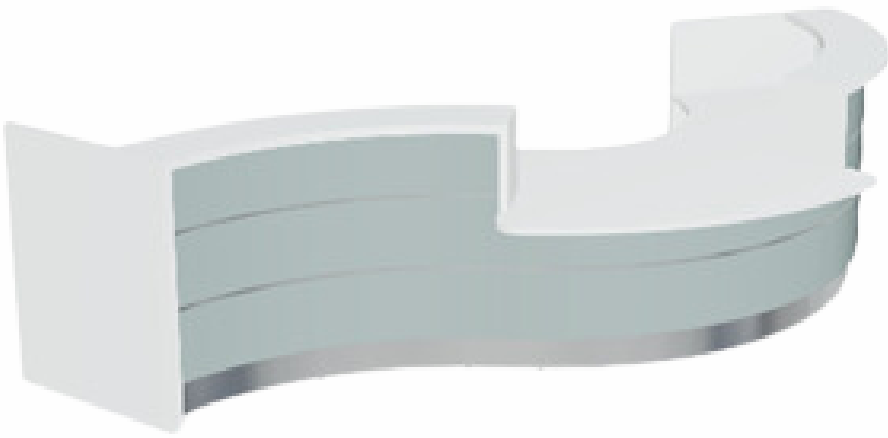
MILLWORK ELEVATIONS



RECEPTION MILLWORK B

$\frac{1}{2}'' = 1'-0''$

NORTH




Questions?

SKY
INTERIOR STUDIO
SKY

Get In Contact

 : INTERIORDESIGNBYSKY

 : INTERIORDESIGNBYSKY

 : (631) 835.0898

 : INTERIORDESIGNBYSKY@GMAIL.COM

 :SKYLARGREENBERG

SKY
INTERIOR STUDIO
SKY