

VAUGHN RESIDENCE

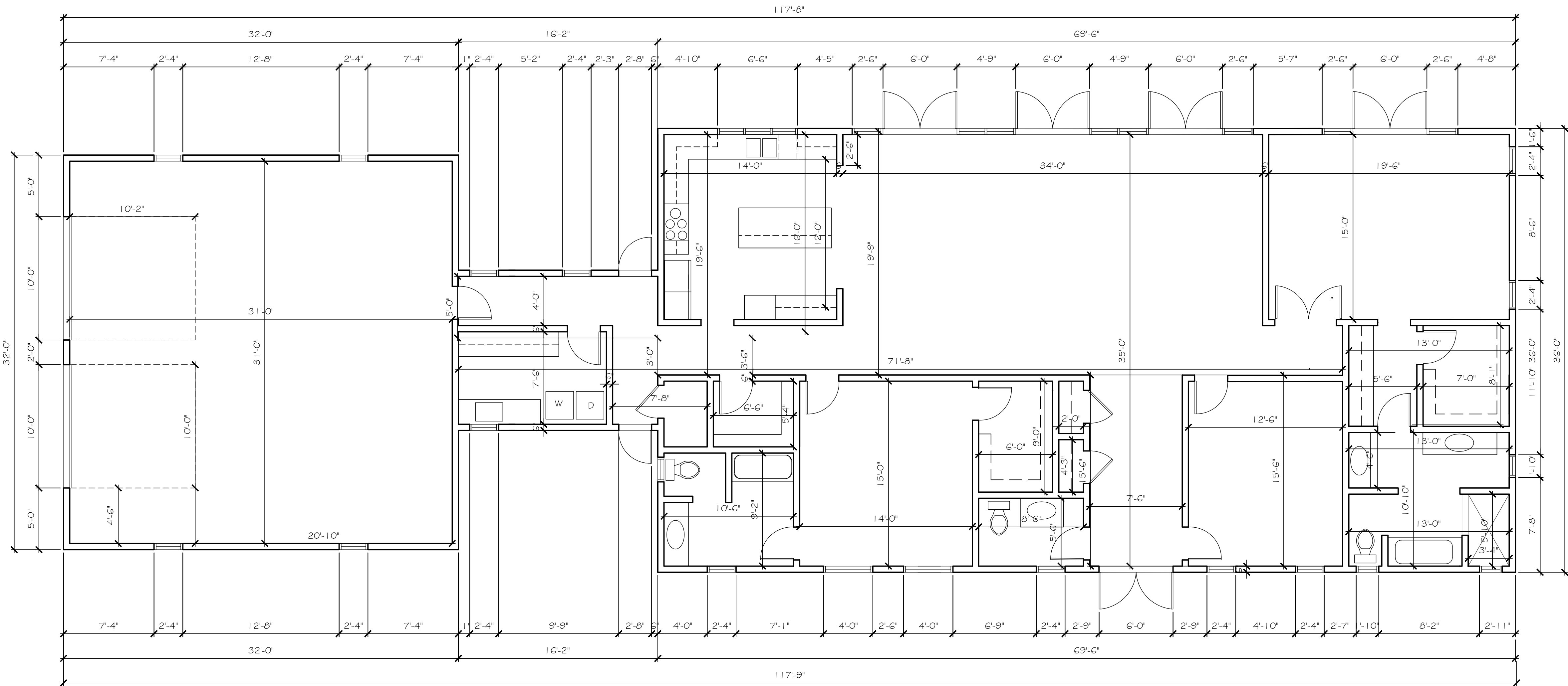
SKYLAR GREENBERG

IND2460C CAD FOR INTERIORS I

SPRING 2023

SHEET LIST

A-1	DIMENSION PLAN
A-2	FURNITURE PLAN
A-3	FINISH PLAN
A-4	FLOOR PATTERN PLAN
A-5	ELECTRICAL PLAN
A-6	REFLECTED CEILING PLAN
A-7	ELEVATIONS
A-8	SCHEDULES



DIMENSION PLAN

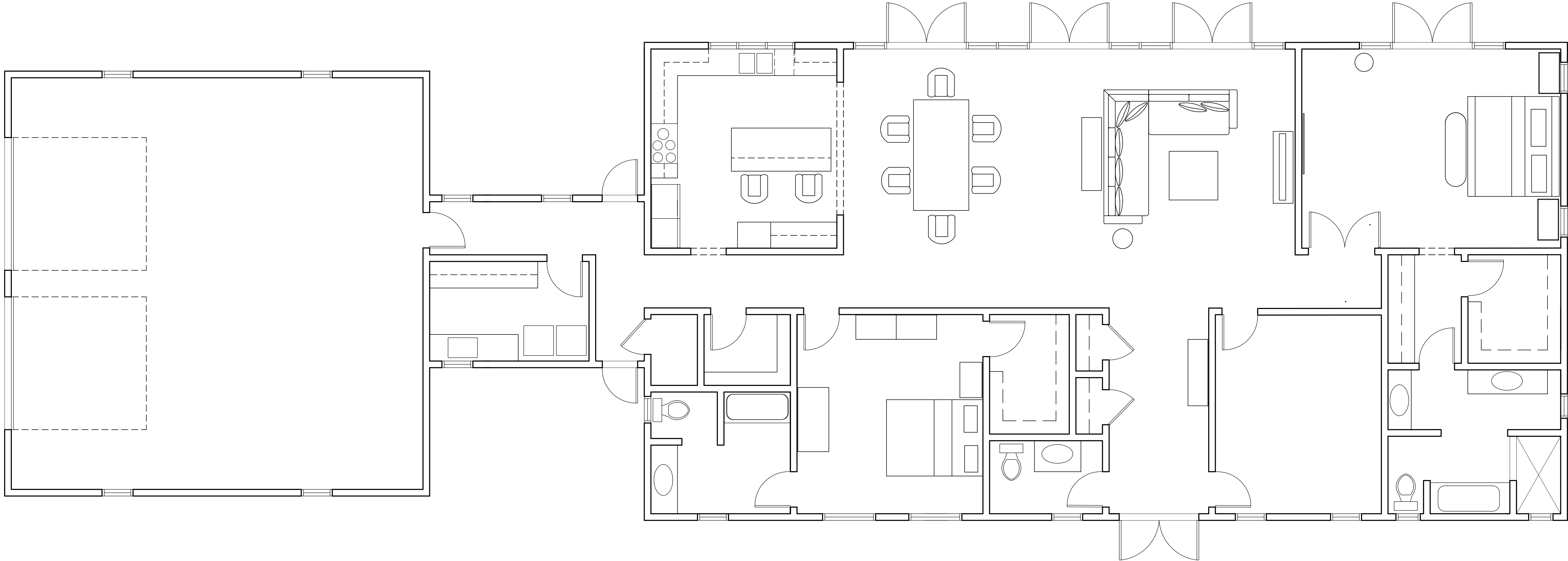
1/4" = 1'-0"



REVISIONS	BY

VAUGHN RESIDENCE
IND2460C CAD FOR INTERIORS I

Sheet Title	VAUGHN RESIDENCE
Date	SPRING 2023
Scale	AS NOTED
Drawn	S.GREENBERG
Job	PROJECT 2
Sheet Number	A-1



FURNITURE PLAN

1/4" = 1'-0"



REVISIONS	BY

VAUGHN RESIDENCE
IND2460C CAD FOR INTERIORS 1

Sheet Title
FURNITURE PLAN
Date
SPRING 2023
Scale
AS NOTED
Drawn
S.GREENBERG
Job
PROJECT 2
Sheet Number

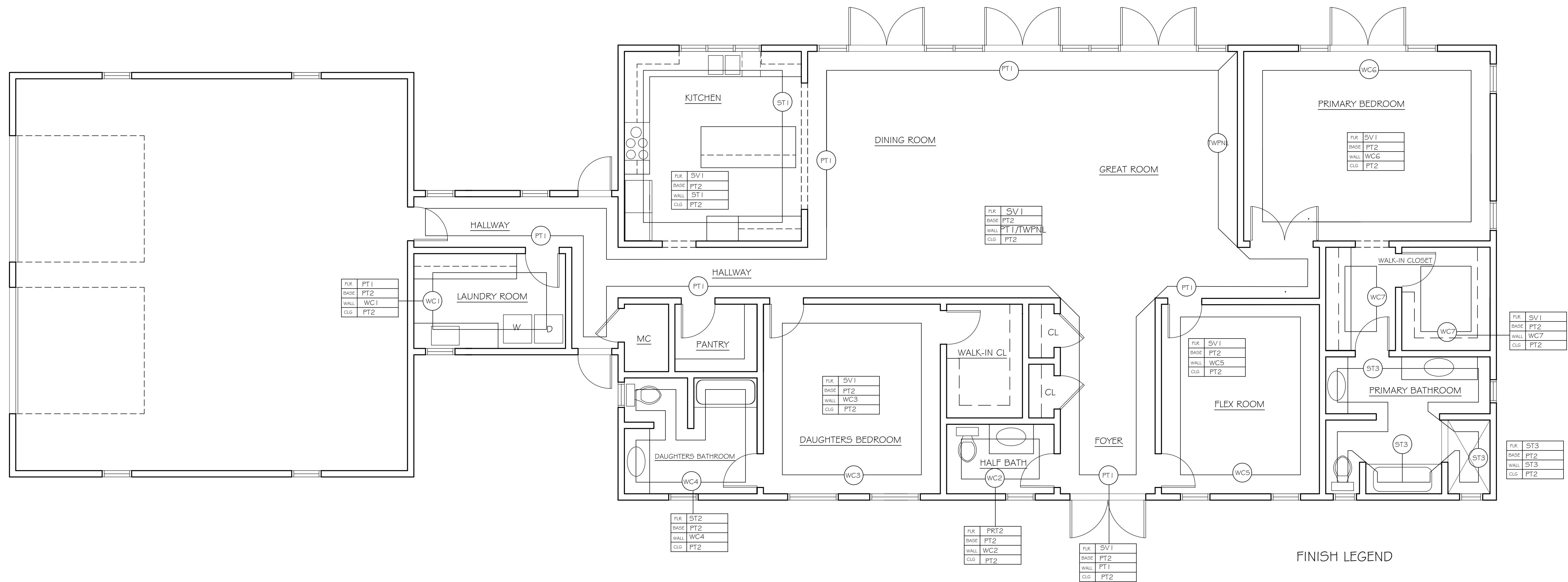
A-2

REVISIONS	BY

VAUGHN RESIDENCE
IND2460C CAD FOR INTERIORS I

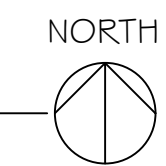
Sheet Title
FINISH PLAN
Date
SPRING 2023
Scale
AS NOTED
Drawn
S. GREENBERG
Job
PROJECT 2
Sheet Number

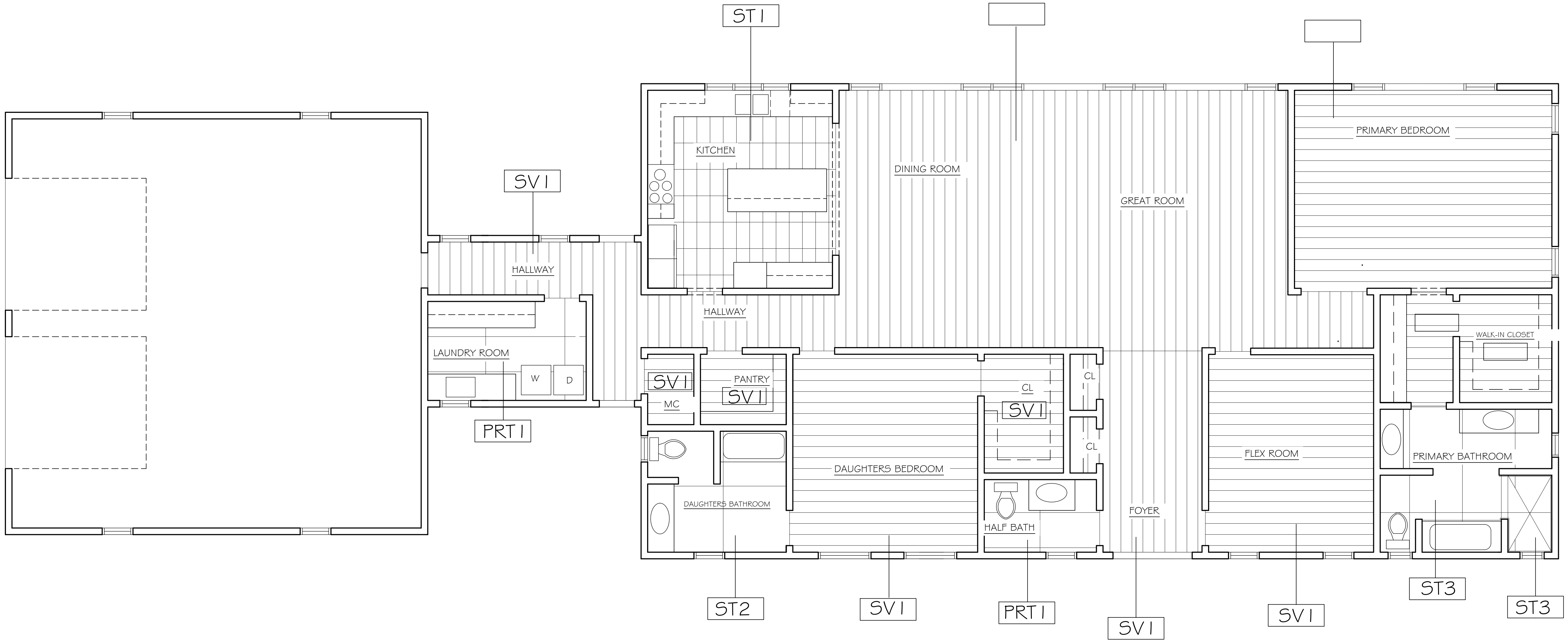
A-3



FINISH LEGEND

FINISH PLAN

$$\frac{1}{4}'' = 1'-0''$$




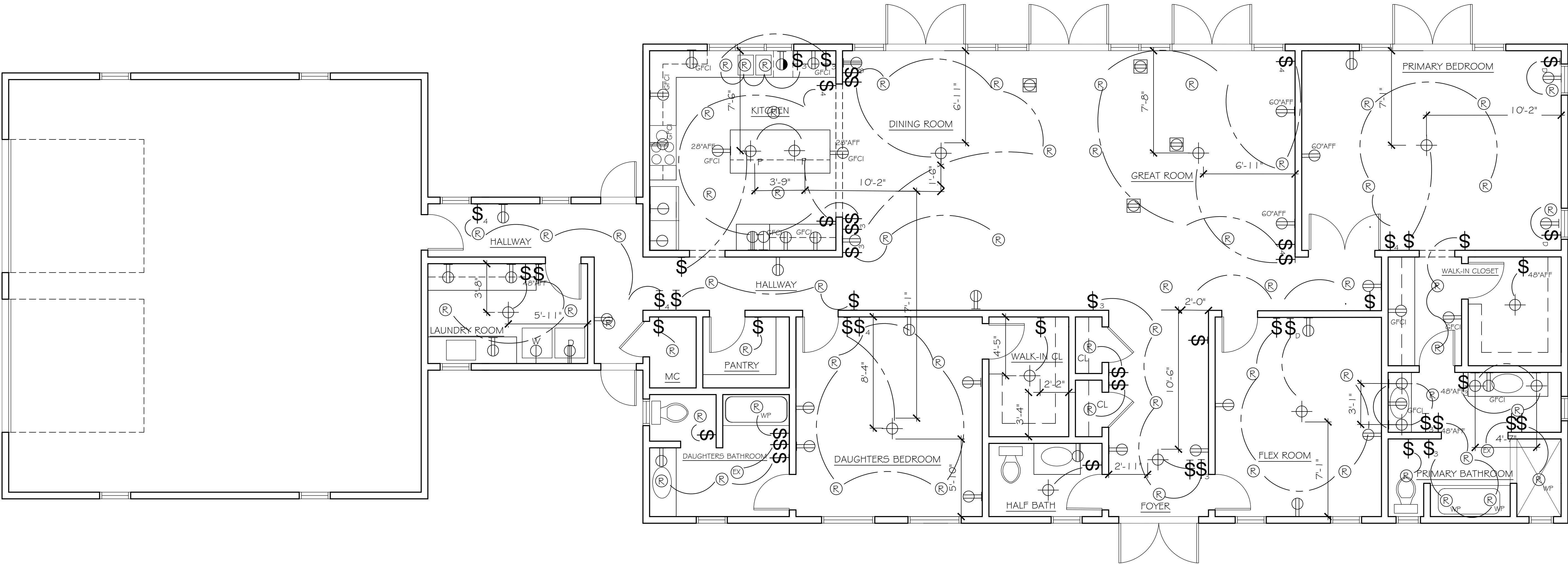
FLOOR PATTERN PLAN
1/4"= 1'-0"



REVISIONS	BY

VAUGHN RESIDENCE
IND2460C CAD FOR INTERIORS I

Sheet Title	FLOOR PATTERN PLAN
Date	SPRING 2023
Scale	AS NOTED
Drawn	S.GREENBERG
Job	PROJECT 2
Sheet Number	A-4



ELECTRICAL PLAN
1/4" = 1'-0"

ELECTRICAL PLAN LEGEND			
	SINGLE RECEPTACLE OUTLET		RECESSED LIGHT FIXTURE
	DUPLEX RECEPTACLE OUTLET		RECESSED LIGHT FIXTURE WATERPROOF
	DUPLEX RECEPTACLE OUTLET WITH GROUND FAULT INTERRUPTOR CIRCUIT		RECESSED WALL WASHER LIGHT FIXTURE
	DUPLEX RECEPTACLE OUTLET WITH TOP HALF SWITCHED		EXHAUST FAN (IN BATHROOMS)
	220V/240V RECEPTACLE OUTLET		CEILING MOUNTED LIGHT FIXTURE
	DUPLEX RECEPTACLE FLUSH FLOOR MOUNTED		CEILING MOUNTED PENDANT LIGHT FIXTURE
	SINGLE POLE SWITCH		WALL MOUNTED LIGHT FIXTURE
	SWITCH WITH DIMMER		TRACK LIGHTING
	THREE-WAY SWITCH		CEILING FAN OUTLET
	FOUR-WAY SWITCH		

ELECTRICAL PLAN NOTES

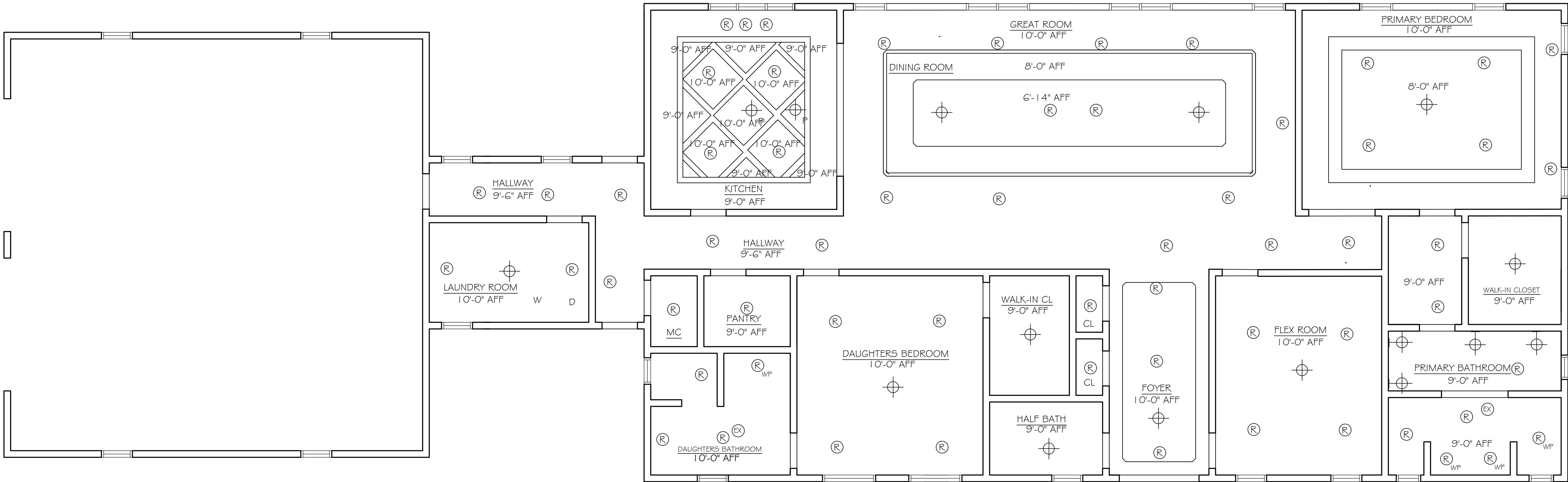
- ALL OUTLETS TO BE AT 12" AFF UNLESS OTHERWISE NOTED
- ALL ABOVE KITCHEN COUNTERTOP, BATHROOM, LAUNDRY ROOM, AND GARAGE OUTLETS TO BE GFCI TYPE
- DISHWASHER, RANGE, WASHER, AND CLOTHES DRYER TO BE GFCI TYPE
- ABOVE KITCHEN COUNTERTOP AND BATHROOM GFCI OUTLETS TO BE AT 48" AFF UNLESS OTHERWISE NOTED
- ALL SWITCHES TO BE AT 48" AFF UNLESS OTHERWISE NOTED
- ALL WALL MOUNTED FIXTURES TO BE AT 72" AFF UNLESS OTHERWISE NOTED
- ALL APPLIANCES, HVAC UNITS AND OTHER EQUIPMENT TO BE WIRED AND OUTLETS MOUNTED PER MANUFACTURER'S SPECIFICATIONS
- ALL HEIGHT DIMENSIONS ARE FROM THE FINISH FLOOR TO THE CENTERLINE OF THE DEVICE

REVISIONS	BY

VAUGHN RESIDENCE

IND2460C CAD FOR INTERIORS 1

Sheet Title
ELECTRICAL PLAN
Date
SPRING 2023
Scale
AS NOTED
Drawn
S.GREENBERG
Job
PROJECT 2
Sheet Number



REFLECTED CEILING PLAN
1/4" = 1'-0"

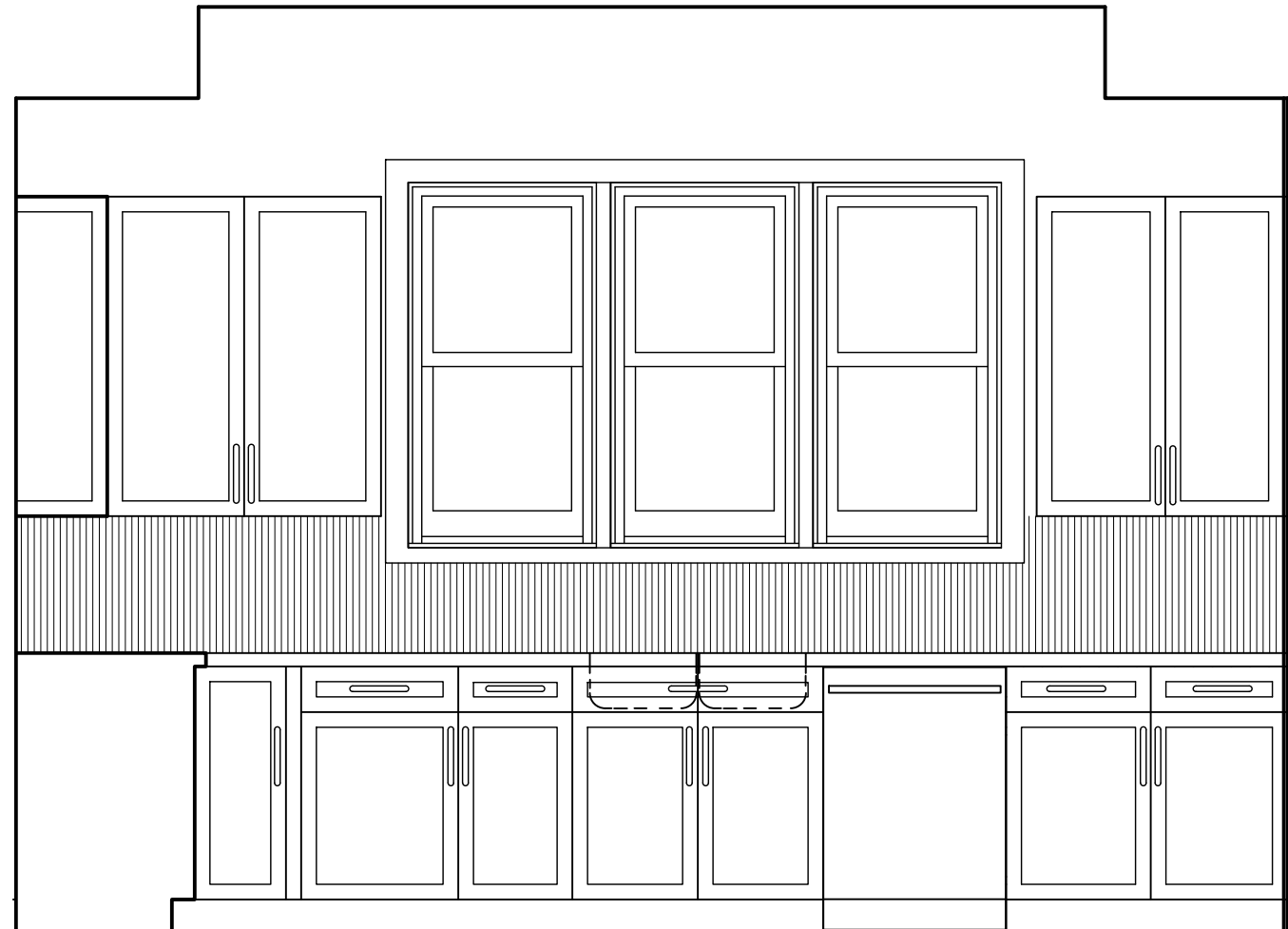


REVISIONS	BY

VAUGHN RESIDENCE
IND2460C CAD FOR INTERIORS I

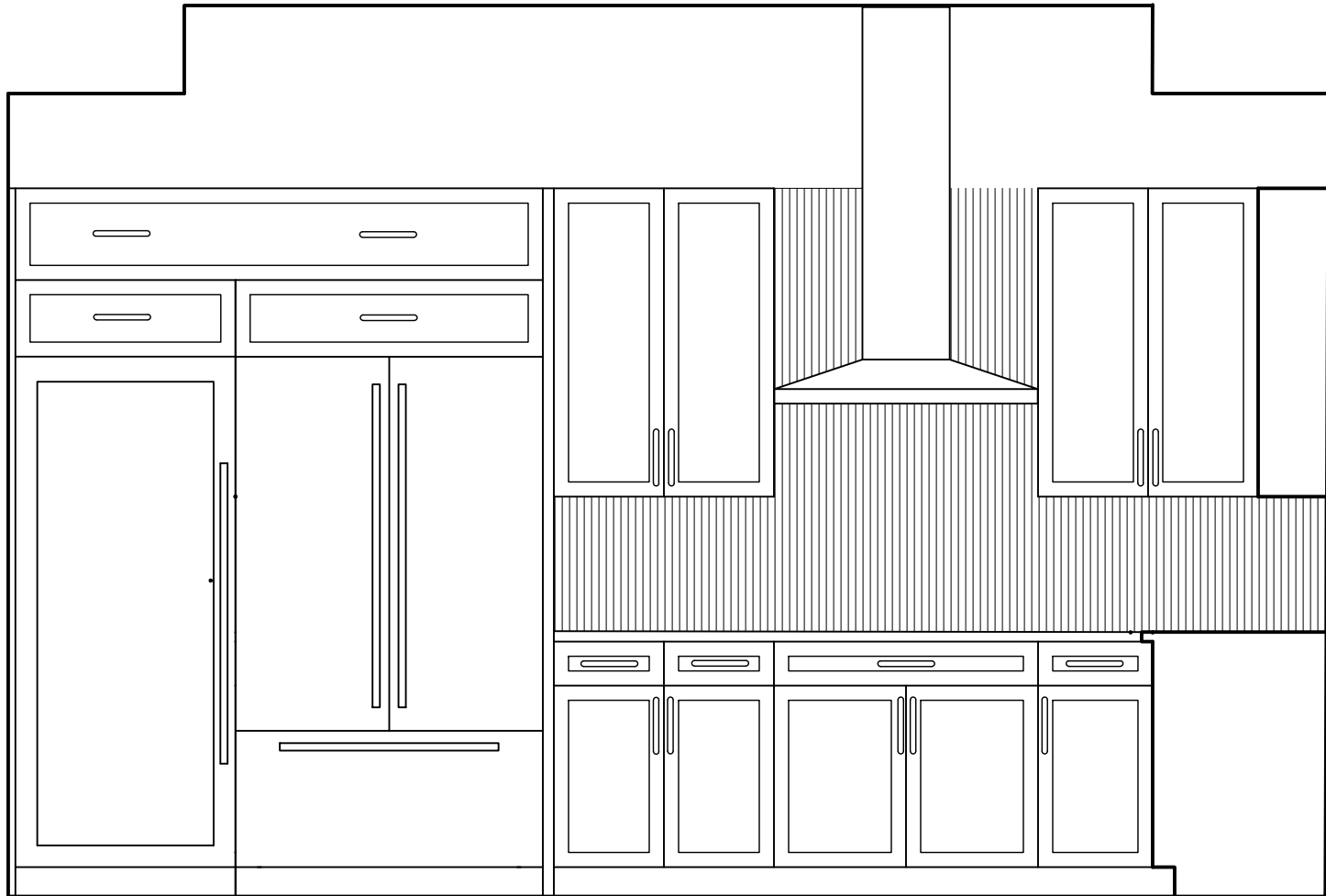
Sheet Title
REFLECTED CEILING PLAN
Date
SPRING 2023
Scale
AS NOTED
Drawn
S.GREENBERG
Job
PROJECT 2
Sheet Number

A-6



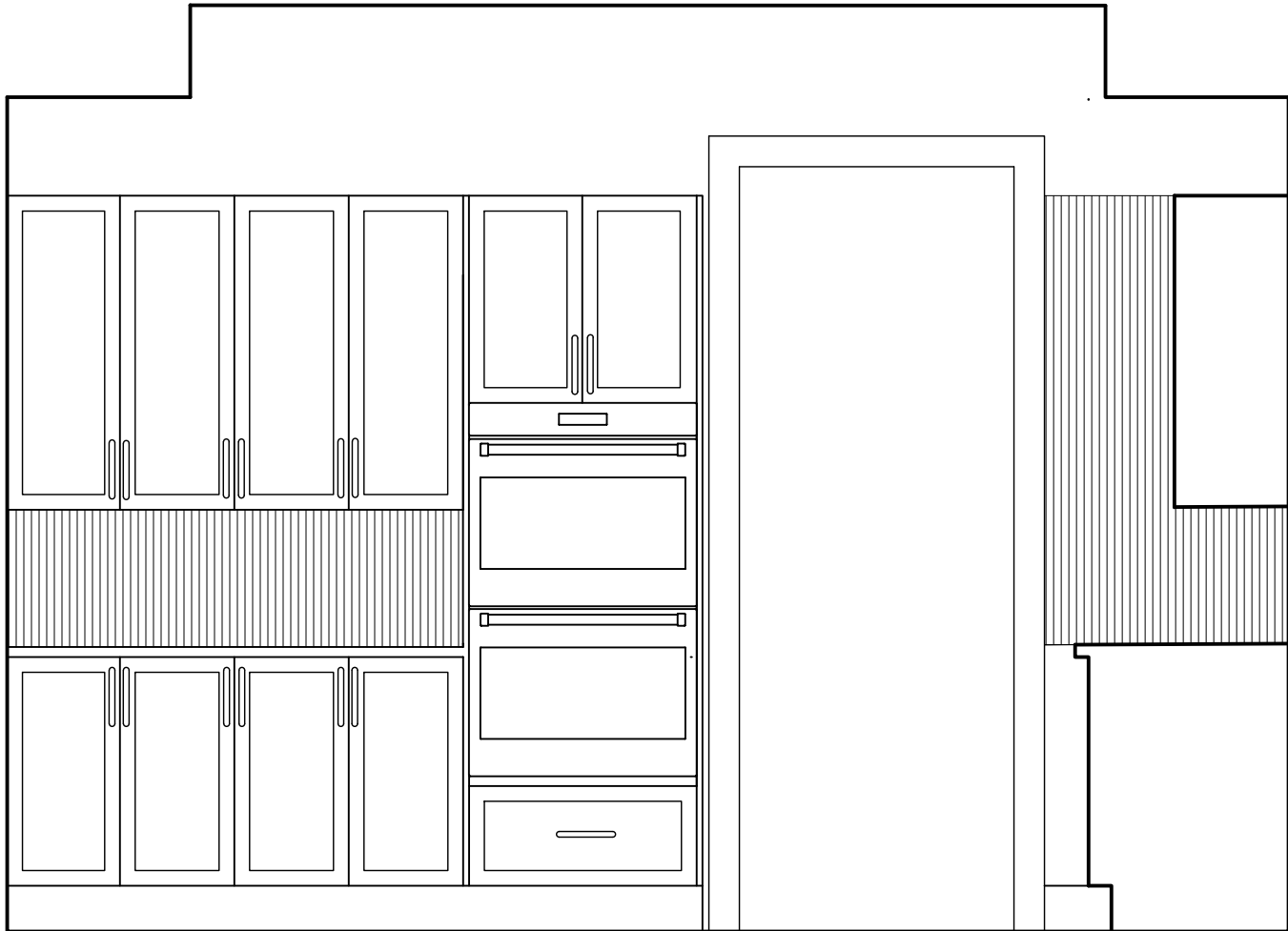
Elevation A

1/2" = 1'-0"



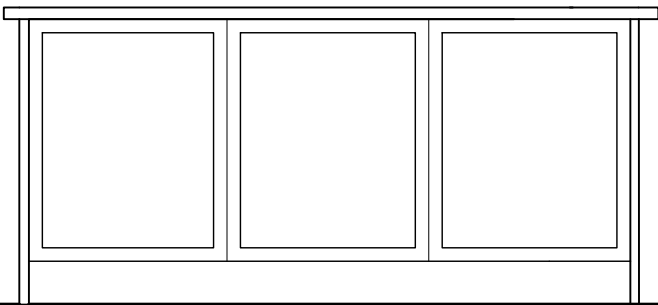
Elevation B

1/2" = 1'-0"



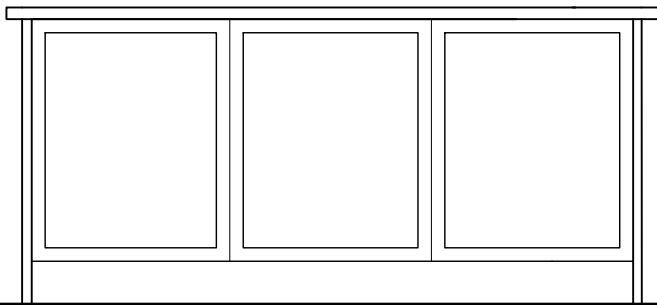
Elevation C

1/2" = 1'-0"



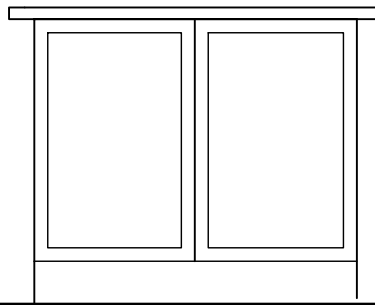
Elevation D

1/2" = 1'-0"



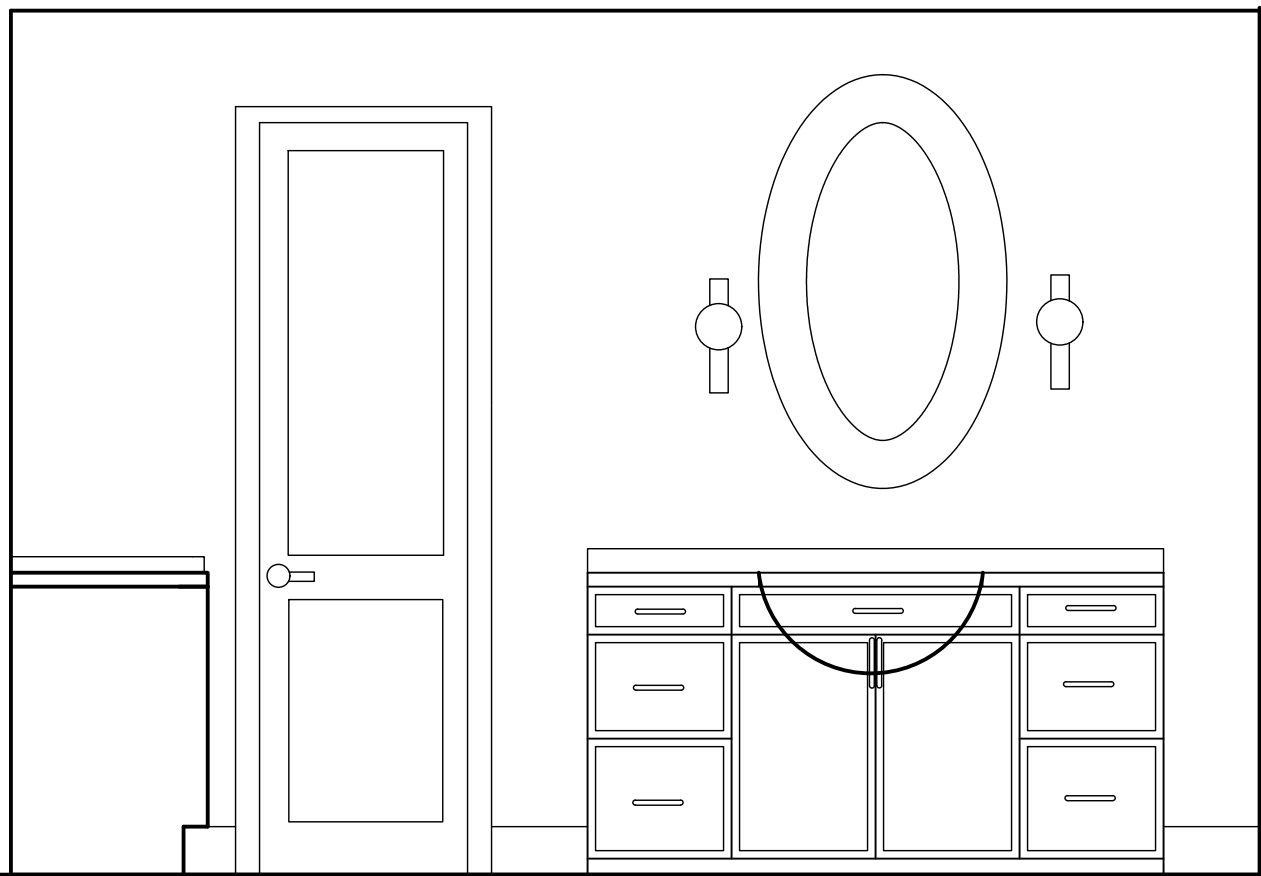
Elevation E

1/2" = 1'-0"



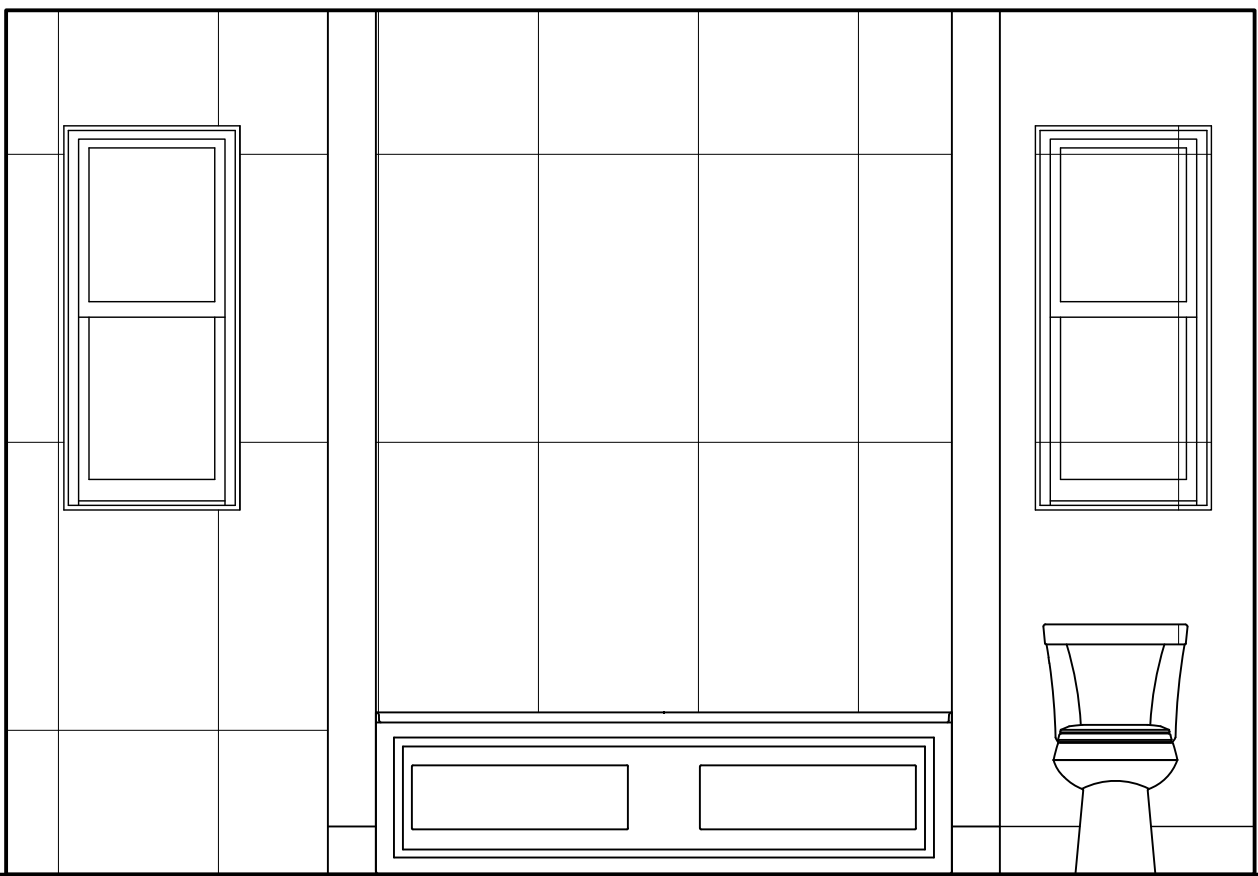
Elevation F

1/2" = 1'-0"



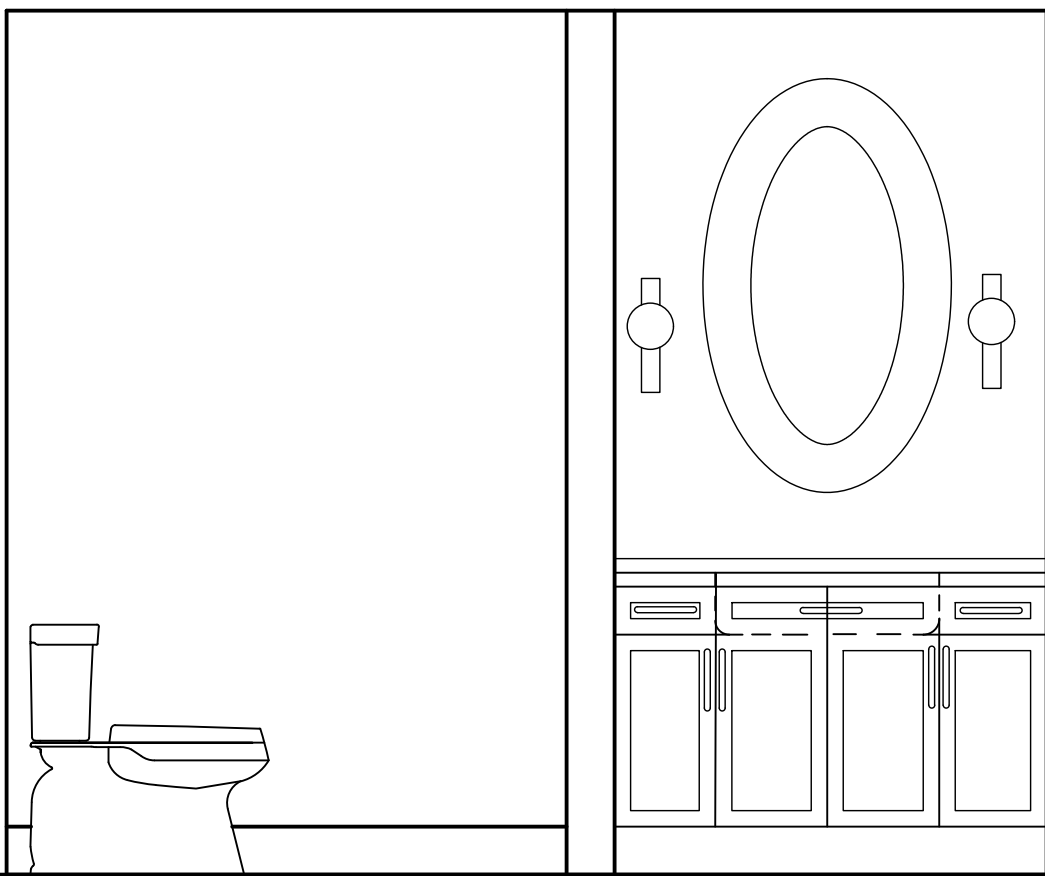
Elevation G

1/2" = 1'-0"



Elevation H

1/2" = 1'-0"



Elevation I

1/2" = 1'-0"

REVISIONS	BY

VAUGHN RESIDENCE
IND2460C CAD FOR INTERIORS I

Sheet Title
ELEVATION
Date
SPRING 2023
Scale
AS NOTED
Drawn
S.GREENBERG
Job
PROJECT 2
Sheet Number

FURNITURE SCHEDULE									
TAG	COUNT	LOCATION	DESCRIPTION	DIMENSIONS	MANUFACTURER	PRODUCT LINE	FINISH	FABRIC	COMMENTS
01	1	FOYER	JIAN CONSOLE: BLH1467	60" W X 18" D X 34" H	KRAVET / BUNNY WILLIAMS	LEE JOFA	BRASS METALWORK, ROPE TWIST HAS MODERN SUN BURST CAPS ON EITHER SIDE		
02	1	FOYER							
03	1	GREAT ROOM	F5520- RAS RIGHT SOFA / F5520 - LCS LEFT CORNER SOFA	121W X 40.5D X 34H # 80W X 40.5D X 34H	KRAVET	SECTIONAL VISUALIZER		33226-101	UPGRADED CUSHIONS: PURE LUX BACK. 75% DUCK FEATHERS AND 25% DUCK DOWN PROOF TICKING BAG.
04	1	GREAT ROOM	QR-21586.CHSTNTBURL.O	44W X 44L X 16H	KRAVET	CURATED KRAVET	CHAMPAGNE	CHESTNUT BURL	
05	1	GREAT ROOM	FAMKE WHITE MEDIA CONSOLE: TOV-D44206	65"W X 18"D X 24"H	TOV FURNITURE	TOV FURNITURE	WHITE # TRANSPARENT LEG COLOR	MDF AND ACRYLIC	SOFT-CLOSE DOORS, FINISHED BACK. SHELVES ARE NOT ADJUSTABLE AND DO NOT HAVE A MAGNETIC DOOR LATCH
06	1	GREAT ROOM	CANYON END TABLE P107E	18W X 18D X 22H	VANGUARD FURNITURE	VANGUARD	AMBAJI WHITE		
07		GREAT ROOM							
08	1	DINING ROOM	3261050 ARGENT DINING TABLE TOP	58" CLEAR GLASS TOP	BERNHARDT INTERIORS	ABBOTT	CLEAR GLASS TOP		POP-IN GLASS BUMPERS INCLUDED, ADJUSTABLE GLIDES
09	1	DINING ROOM	353772 ABBOTT DINING TABLE BASE	100W X 50D X 30H	BERNHARDT INTERIORS	ABBOTT	STEEL BASE- PATINATED BRASS FINISH		
10	6	DINING ROOM	SKYE CHANNEL BACK METAL FRAME CHAIR V962C-CH	24.5W X 24D X 31H	VANGUARD FURNITURE	VANGUARD	SATIN BRASS	JAKE IVORY	2.5 YARDS OF FABRIC REQUIRED WEIGHT IS 48LBS
11	2	KITCHEN	SKYE CHANNEL BACK METAL FRAME BAR STOOL V962C-BS	24.5W X 24D X 41H	VANGUARD FURNITURE	VANGUARD	SATIN BRASS	JAKE IVORY	WEIGHT IS 50 LBS, 2.5 YARDS OF FABRIC REQUIRED
12	1	PRIMARY BEDROOM	KING BED	82.75W X 90.25D X 60.50H	BERNHARDT INTERIORS	SILHOUETTE PANEL BED KING		B576	UPHOLSTERED VERTICAL CHanneLED FOOTBOARD
13	2	PRIMARY BEDROOM	GOTTFRIED CCO7 NIGHTSTAND	37.25W X 19D X 24.76H	VANGUARD FURNITURE	MAKE IT YOURS,MIY BEDROOM, VANGUARD	BLUE TABAC SHAGREEN (F23)		INSIDE # OUTSIDE BEAD (F02), SMALL WALLACE PULL (H05)
14	1	PRIMARY BEDROOM	FLORENCE CHAISE F5571CH5	44W X 44D X 32H	KRAVET	MICHAEL BERMAN MODERN	KRAVET OAK		
15	1	PRIMARY BEDROOM	FLORENCE COCKTAIL OTTOMAN F5571-O	38W X 38D X 18H	KRAVET	MICHAEL BERMAN MODERN	BRASS LEGS		PANCAKE TUFTED SEAT WITH VELCRO
16	1	PRIMARY BEDROOM	KRETE ACCENT TABLE 3138-291	11.75W X 11.75D X 19.75H	ELK HOME	MARKETPLACE	BLUE AGATE, ANTIQUE GOLD		GLASS MATERIAL, METAL, AND IRON
17	1	PRIMARY BEDROOM	KENYA SEA BLUE VELVET BENCH	48W X 18.8D X 18.8H	TOV FURNITURE	TOV-OC6381		SEA BLUE VELVET	FILL MATERIAL IS FIBER WRAPPED FOAM
18	1	GREAT ROOM	P2195C-LG-WALLACE	66W X 18D X 29H	VANGUARD FURNITURE	VANGUARD	LANGDON WITH BRUSHED LINEN ON DOORS	ASH SOLIDS AND VENEERS WOOD AND METAL MATERIALS	HARDWARE IS SATIN BRASS BASE AND PULLS
19	1	DAUGHTERS BEDROOM	EMILIO BED QUEEN	69W X 87L X 72H	VRELLN	BEDS	CHALK COATED STONEWASHED	BIYANGA YP19001	100% BELGIUM LINEN
20	2	DAUGHTERS BEDROOM	DERING HARBOR GRASSCLOTH NIGHTSTAND	32W X 20D X 30H	KRAVET	DERING HARBOR	GRASSCLOTH OAK WSB115-PO	KRAVET MAPLE # OAK	
21	1	DAUGHTERS BEDROOM	DERING HARBOR GRASSCLOTH DRESSER	73W X 22D X 35H	KRAVET	DERING HARBOR	GRASSCLOTH OAK WSB115-PO	KRAVET MAPLE # OAK	
22	1	DAUGHTERS BEDROOM	LOCKHEAD DESK CHAIR H652-DC	27.5W X 30D X 44.5H	KRAVET	DESK CHAIR/	POLISHED ALUMINUM BASE		
23	1	DAUGHTERS BEDROOM	LAURENT DESK QR-22922.BRASS.O	58W X 28D X 30H	KRAVET	CURATEDKRAVET	POLISHED BRASS, TOP OF DESK AGED MIRRORRED TOP		

MATERIAL SPECIFICATION								
TAGS	LOCATION	DESCRIPTION	SIZE	MANUFACTURER	PRODUCT LINE	COLOR	FINISH	COMMENTS
SV1	FOYER, GREAT ROOM, KITCHEN, CLOSETS, FLEX ROOM, PRIMARY BEDROOM, DAUGHTERS BEDROOM, ALL HALLWAYS	VINYL SHEET FLOORING	12'W	ARMSTRONG FLOORING	STRATAMAXPRO	GRIEGE	LOW GLOSS	
PT1	FOYER, GREAT ROOM, HALLWAYS, AND PANTRY	WATERBORNE	N/A	BENJAMIN MOORE	AURA WATERBORNE	ALABASTER	MATTE	
TWPNL-WC	GREAT ROOM	WALLCOVERING MARBLE WALL	21" W # 11 YDS	THE WALLPAPER COMPANY	DYW103957	NEUTRAL	N/A	HIGH PERFORMANCE ON NON WOVEN BACKING
ST1	KITCHEN	TILE	12" X 24" X 3/8"	ARTISTIC TILE	FLUTE	LILAC	HONED	
WC1	LAUNDRY ROOM	WALLPAPER	27" X 27"	YORK WALLCOVERINGS	MID CENTURY A-MAZE	WHITE/TAN	N/A	PASTE THE WALL-WASHABLE-PEELABLE
PRT1	LAUNDRY ROOM AND HALF BATH	PORCELAIN TILE	32" X 72"	WALKERZANGER	STILO	ABORIO MELANGE	N/A	THICKNESS: 3/8"
WC2	HALF BATH	WALLPAPER	37.5"	PHILIP JEFFERIES	CONCRETE WASHI	PAVING THE WAY	N/A	ASTM E84 CLASS A
WC3	DAUGHTERS BEDROOM	WALLPAPER	20.5" W	KINGDOM	ICONS	PLASTER PINK/MINT	N/A	
PT2	ALL CLOSETS	INTERIOR PAINT	N/A	BENJAMIN MOORE	AURA WATERBORNE INTERIOR PAINT	ALABASTER	MATTE	
WC4	DAUGHTERS BATHROOM	WALLPAPER	27.5" W	KRAVET	LORENZO CASTILLO V	MAHON-ROSA	N/A	
ST2	DAUGHTERS BATHROOM # BATH	POLISHED STONE	3/4" SLAB	ARTISTIC TILE	POLISHED STONE	CRISTALLO PINK	POLISHED	
WC5	FLEX ROOM	WALLPAPER	20.86"W	SCALAMANDRE	WASHI NIPPON COLLECTION	WHITE	N/A	
WC6	PRIMARY BEDROOM	VINYL WALLPAPER	54"W	PHILLIP JEFFERIES	VINYL GATEWAY	IMPERIAL NAVY	N/A	
ST3	PRIMARY BATHROOM, BATH, AND SHOWER	POLISHED STONE	12" X 24"	ARTISTIC TILE	FANTASTICO ARNI	FANTASTICO ARNI CREAM, CHARCOAL,MAUVE	HONED	
WC7	PRIMARY WALK-IN CLOSET	WALLPAPER	34.25"W	SCALAMANDRE	CO. DE GROUNDS COLLECTION	IVORY	N/A	EURO CLASS B-51, DO
PT3	ALL ROOMS	INTERIOR ACRYLIC LATEX PAINT	N/A	SHERWIN WILLIAMS	SUPERPAINT	CEILING BRIGHT WHITE	FLAT	
PT4	ALL ROOMS	URETHENE TRIM ENAMEL	N/A	SHERWIN WILLIAMS	EMERALD	CEILING BRIGHT WHITE	SATIN	

ROOM FINISH SCHEDULE					
ROOM NAME	FLOOR	BASE	WALLS	CEILING	NOTES
FOYER	SV1	PT2	PT1		NOTES
FOYER CLOSETS	SV1	PT2	PT1		NOTES
HALF BATH	PRT1	PT2	WC2		NOTES
GREAT ROOM,HALLWAY # PANTRY	SV1	PT2	PT1		NOTES
GREAT ROOM	SV1	PT2	TWPNL		
KITCHEN	SV1	PT2	ST1		NOTES
LAUNDRY ROOM	PRT1	PT2	WC1		NOTES
PRIMARY BEDROOM	SV1	PT2	WC6		
PRIMARY BEDROOM CLOSETS	SV1	PT2	WC7		
PRIMARY BATH	ST3	PT2	ST3		
PIMARY BATH SHOWER	ST3	PT2	ST3		
PRIMARY BATH TUB SURROUND	N/A	N/A	ST3		
DAUGHTERS BEDROOM	SV1	PT2	WC3		
DAUGHTERS BEDROOM CLOSET	SV1	PT2	PT2		
DAUGHTERS BATH SURROUND	N/A	N/A	ST2		
DAUGHTERS BATH		N/A	ST2		
FLEX ROOM	SV1	PT2	WC5		

REVISIONS

BY

DATE

DESCRIPTION

DATE

DESCRIPTION

DATE

DESCRIPTION

DATE

DESCRIPTION

DATE

DESCRIPTION

DATE

DESCRIPTION

DATE

DESCRIPTION

DATE

DESCRIPTION

DATE

DESCRIPTION

DATE

DESCRIPTION

DATE

DESCRIPTION

DATE

DESCRIPTION

DATE

DESCRIPTION

DATE

DESCRIPTION

DATE

DESCRIPTION

DATE

DESCRIPTION

DATE

DESCRIPTION

DATE

DESCRIPTION

DATE

DESCRIPTION

DATE

DESCRIPTION

DATE

DESCRIPTION

DATE

DESCRIPTION

DATE

DESCRIPTION

DATE

DESCRIPTION

DATE

DESCRIPTION

DATE

DESCRIPTION

DATE

DESCRIPTION

DATE

DESCRIPTION

DATE

DESCRIPTION

DATE

DESCRIPTION

DATE

DESCRIPTION

DATE

DESCRIPTION

DATE

DESCRIPTION

DATE

DESCRIPTION

DATE

DESCRIPTION

DATE

DESCRIPTION

DATE

DESCRIPTION

DATE

DESCRIPTION

DATE

DESCRIPTION

DATE

DESCRIPTION

DATE

DESCRIPTION

DATE

DESCRIPTION

DATE

DESCRIPTION

DATE

DESCRIPTION

DATE

DESCRIPTION

DATE

DESCRIPTION

DATE

DESCRIPTION

DATE

DESCRIPTION

DATE

DESCRIPTION

DATE

DESCRIPTION

DATE

DESCRIPTION

DATE

DESCRIPTION

DATE

DESCRIPTION

DATE

DESCRIPTION

DATE

DESCRIPTION

DATE

DESCRIPTION

DATE

DESCRIPTION

DATE

DESCRIPTION

DATE

DESCRIPTION

DATE

DESCRIPTION

DATE

DESCRIPTION

DATE

DESCRIPTION

DATE

DESCRIPTION

DATE

DESCRIPTION

DATE

DESCRIPTION

DATE

DESCRIPTION

DATE

DESCRIPTION

DATE

DESCRIPTION

DATE

DESCRIPTION

DATE

DESCRIPTION

DATE

DESCRIPTION

DATE

DESCRIPTION

DATE

DESCRIPTION

DATE

DESCRIPTION

DATE

DESCRIPTION

DATE

DESCRIPTION

DATE

DESCRIPTION

DATE

DESCRIPTION

DATE

DESCRIPTION

DATE

DESCRIPTION

DATE

DESCRIPTION

DATE

DESCRIPTION

DATE

DESCRIPTION

DATE

DESCRIPTION

DATE

DESCRIPTION

DATE

DESCRIPTION

DATE

DESCRIPTION

DATE

DESCRIPTION

DATE

DESCRIPTION

DATE

DESCRIPTION

DATE

DESCRIPTION

DATE

DESCRIPTION

DATE

DESCRIPTION

DATE

DESCRIPTION

DATE

DESCRIPTION

DATE

DESCRIPTION

DATE

DESCRIPTION

DATE

DESCRIPTION

DATE

DESCRIPTION

DATE

DESCRIPTION

DATE

DESCRIPTION

DATE

DESCRIPTION

DATE

DESCRIPTION

DATE

DESCRIPTION

DATE

DESCRIPTION

DATE

DESCRIPTION

DATE

DESCRIPTION

DATE

DESCRIPTION

DATE

DESCRIPTION

DATE

DESCRIPTION

DATE

DESCRIPTION

DATE

DESCRIPTION

DATE

DESCRIPTION

DATE

DESCRIPTION

DATE

DESCRIPTION

DATE

DESCRIPTION

DATE

DESCRIPTION

DATE

DESCRIPTION

DATE

DESCRIPTION

DATE

DESCRIPTION

DATE

DESCRIPTION

DATE

DESCRIPTION

DATE

DESCRIPTION

DATE

DESCRIPTION

DATE

DESCRIPTION

DATE

DESCRIPTION

DATE

DESCRIPTION

DATE

DESCRIPTION

DATE

DESCRIPTION

DATE

DESCRIPTION

DATE

DESCRIPTION

DATE

DESCRIPTION

DATE

DESCRIPTION

DATE

DESCRIPTION

DATE

DESCRIPTION

DATE

DESCRIPTION

DATE

DESCRIPTION

DATE

DESCRIPTION

DATE

DESCRIPTION

DATE

DESCRIPTION

DATE

DESCRIPTION

DATE

DESCRIPTION

DATE

DESCRIPTION

DATE

DESCRIPTION

DATE

DESCRIPTION

DATE

DESCRIPTION

DATE

DESCRIPTION

DATE

DESCRIPTION

DATE

DESCRIPTION

DATE

DESCRIPTION

DATE

DESCRIPTION

DATE

DESCRIPTION

DATE

DESCRIPTION

DATE

DESCRIPTION

DATE

DESCRIPTION