



**COVENANT HOUSE**

**SPECIFICATION BOOK**

**IND2237C – DESIGN STUDIO 3**

**FALL 2023**

**SKYLAR GREENBERG**

## INDEX

<b>FURNITURE.....</b>	<b>03-49</b>
RECEPTION .....	03-12
MULTI PURPOSE ROOM & CONFERENCE.....	13-18
WORKROOM .....	19-20
GENERAL OFFICES .....	21-27
EXECUTIVE OFFICES .....	28-38
TEAM AREA .....	39-43
CAFÉ .....	44-49
<b>FINISHES.....</b>	<b>50</b>
WALLS.....	51-59
FLOORING.....	60-63
CEILING.....	64-71
<b>LIGHTING .....</b>	<b>72-78</b>



# **RECEPTION FURNITURE**



**PROJECT NUMBER:** IND2237C DESIGN STUDIO 3

**PROJECT NAME:** Covenant House

**PROJECT LOCATION:** Reception

**DESIGNER:** Skylar Greenberg

**TAG:** DK-1

**QUANTITY:** 1

**LOCATION:** Reception

**MANUFACTURER INFORMATION:**

*.mdd.eu*

*1 (201) 933. 7787*

*Sales-usa@mdd.pl*

**DESCRIPTION:** Modular Reception Desk

**DIMENSIONS:** 72 ¼" W x 165 5/32" L x 43 ½"H

**MANUFACTURER:** .MDD

**PRODUCT LINE:** Valde

**FINISH/COLOR:** Front: Sky-blue matte

**Top:** white pastel

**FABRIC:** N/A

**PATTERN:** N / A

**REPEAT:** N/A

**MATERIAL CONTENT:** N/A

**RETAIL COST:**

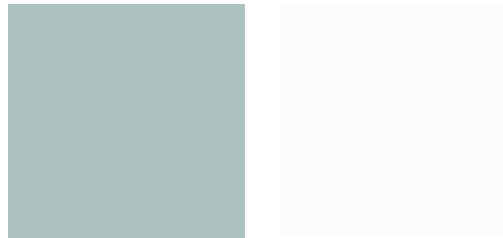
**NET COST:**

**EXTENDED COST:**

**Image:**



**Fabric / Finish:**



**WEBSITE:** [https://mdd.eu/en/reception-desks/valde/?preconf=3043&symbol=LAV35L&con=B1-0067\\_F1-0184\\_U1-1057\\_U2-1065](https://mdd.eu/en/reception-desks/valde/?preconf=3043&symbol=LAV35L&con=B1-0067_F1-0184_U1-1057_U2-1065)

**NOTES:**

*\*NET COST WAS CALCULATED BY TAKING 20% OFF RETAIL COST*



**PROJECT NUMBER:** IND2237C DESIGN STUDIO 3

**PROJECT NAME:** Covenant House

**PROJECT LOCATION:** Reception

**DESIGNER:** Skylar Greenberg

**TAG:** CH-1

**QUANTITY:** 2

**LOCATION:** Reception Lounge Chairs

**MANUFACTURER INFORMATION:**

*ERG International  
361 N. Bernoulli Circle  
Oxnard, CA 93030  
1(800) 446.1186*

**DESCRIPTION:** Metal Wire Frame Lounge Chair

**DIMENSIONS:** 31.5" W x 31" D x 44.5" H

**MANUFACTURER:** ERG International

**PRODUCT LINE:** Charlotte

**FINISH/COLOR:** Gold Coast Wire Frame

**FABRIC:** Apex-Ginger

**PATTERN:** N / A

**REPEAT:** 0.275" H, 0.196" V

**MATERIAL CONTENT:** 88% Polyester, 12% Tekloom

**RETAIL COST:** N/A

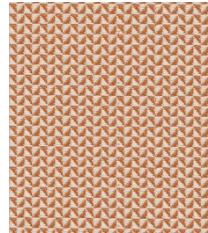
**NET COST:** N/A

**EXTENDED COST:** N/A

**Image:**



**Fabric / Finish:**



Gold Coast  
Charlotte & Marlo  
Wire Frame Only

**WEBSITE:** [ERG International | Charlotte](#)  
[Ginger - Apex | Concertex](#)

**NOTES:**

*\*NET COST WAS CALCULATED BY TAKING 20% OFF RETAIL COST*



**PROJECT NUMBER:** IND2237C DESIGN STUDIO 3

**PROJECT NAME:** Covenant House

**PROJECT LOCATION:** Reception

**DESIGNER:** Skylar Greenberg

**TAG:** S-1

**QUANTITY:** 1

**LOCATION:** Reception

**MANUFACTURER INFORMATION:**

*National Office Furniture  
1610 Royal St, Jasper, IN 47546  
(800) 482.1717*

**DESCRIPTION:** Left Arm Sofa

**DIMENSIONS:** 29 ½" W x 30" D x 32 ½" H

**MANUFACTURER:** National Office Furniture

**PRODUCT LINE:** Swift

**FINISH/COLOR:** 497 Metal Legs

**FABRIC:** Sky (13118)

**PATTERN:** N / A

**REPEAT:** None

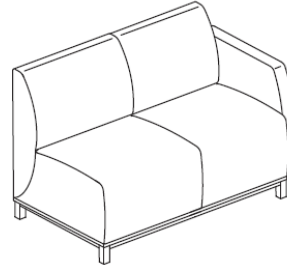
**MATERIAL CONTENT:** 100% Polyester (60% post-consumer recycled)

**RETAIL COST:** N/A

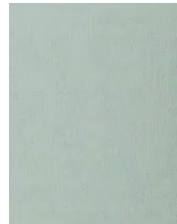
**NET COST:** N/A

**EXTENDED COST:** N/A

**Image:**



**Fabric / Finish:**



**WEBSITE:**

**WEBSITE:** [https://mdd.eu/en/reception-desks/valde/?preconf=3043&symbol=LAV35L&con=B1-0067\\_F1-0184\\_U1-1057\\_U2-1065](https://mdd.eu/en/reception-desks/valde/?preconf=3043&symbol=LAV35L&con=B1-0067_F1-0184_U1-1057_U2-1065)

**NOTES:** Fabric finish is PFOA Stain Repellent

\*NET COST WAS CALCULATED BY TAKING 20% OFF RETAIL COST



**PROJECT NUMBER:** IND2237C DESIGN STUDIO 3

**PROJECT NAME:** Covenant House

**PROJECT LOCATION:** Reception

**DESIGNER:** Skylar Greenberg

**TAG:** S-2

**QUANTITY:** 2

**LOCATION:** Armless Sofa in Reception

**MANUFACTURER INFORMATION:**

*National Office Furniture  
1610 Royal St, Jasper, IN 47546  
(800) 482.1717*

**DESCRIPTION:** Armless

**DIMENSIONS:**

**MANUFACTURER:** National Office Furniture

**PRODUCT LINE:** Swift

**FINISH/COLOR:** 497 Metal Legs

**FABRIC:** Sky (13118)

**PATTERN:** N / A

**REPEAT:** N/A

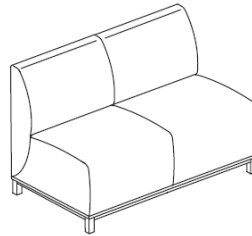
**MATERIAL CONTENT:** 100% Polyester (60% post-consumer recycled)

**RETAIL COST:**

**NET COST:**

**EXTENDED COST:**

**Image:**



**Fabric / Finish:**



497

**WEBSITE:** [https://mdd.eu/en/reception-desks/valde/?preconf=3043&symbol=LAV35L&con=B1-0067\\_F1-0184\\_U1-1057\\_U2-1065](https://mdd.eu/en/reception-desks/valde/?preconf=3043&symbol=LAV35L&con=B1-0067_F1-0184_U1-1057_U2-1065)

**NOTES:**

*\*NET COST WAS CALCULATED BY TAKING 20% OFF RETAIL COST*



**PROJECT NUMBER:** IND2237C DESIGN STUDIO 3

**PROJECT NAME:** Covenant House

**PROJECT LOCATION:** Reception

**DESIGNER:** Skylar Greenberg

**TAG:** S-3

**QUANTITY:** 1

**LOCATION:**

**MANUFACTURER INFORMATION:**

*National Office Furniture*

*1610 Royal St, Jasper, IN 47546*

*(800) 482.1717*

**DESCRIPTION:** Modular Reception Desk

**DIMENSIONS:**

**MANUFACTURER:** National Office Furniture

**PRODUCT LINE:** Swift

**FINISH/COLOR:** 497 Metal Legs

**FABRIC:** Sky (13118)

**PATTERN:** N / A

**REPEAT:** N/A

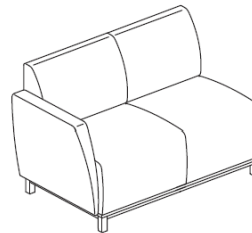
**MATERIAL CONTENT:** 100% Polyester (60% post-consumer recycled)

**RETAIL COST:**

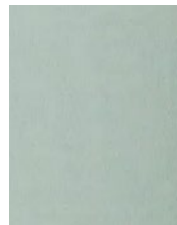
**NET COST:**

**EXTENDED COST:**

**Image:**



**Fabric / Finish:**



497

**WEBSITE:** [https://mdd.eu/en/reception-desks/valde/?preconf=3043&symbol=LAV35L&con=B1-0067\\_F1-0184\\_U1-1057\\_U2-1065](https://mdd.eu/en/reception-desks/valde/?preconf=3043&symbol=LAV35L&con=B1-0067_F1-0184_U1-1057_U2-1065)

**NOTES:**

*\*NET COST WAS CALCULATED BY TAKING 20% OFF RETAIL COST*





**PROJECT NUMBER:** IND2237C DESIGN STUDIO 3

**PROJECT NAME:** Covenant House

**PROJECT LOCATION:** Reception

**DESIGNER:** Skylar Greenberg

**TAG:** T-1

**QUANTITY:** 3

**LOCATION:**

**MANUFACTURER INFORMATION:**

*National Office Furniture  
1610 Royal St, Jasper, IN 47546  
(800) 482.1717*

**DESCRIPTION:** 90 Degree Table

**DIMENSIONS:** 28" W x 28" D x 16 ½" H

**MANUFACTURER:** National Office Furniture

**PRODUCT LINE:** Swift

**FINISH/COLOR:** Willow, Frosty White

**FABRIC:**

**PATTERN:** N / A

**REPEAT:** N/A

**MATERIAL CONTENT:**

**RETAIL COST:**

**NET COST:**

**EXTENDED COST:**

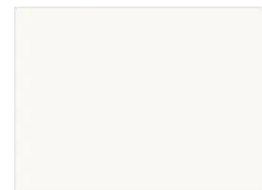
**Image:**



**Fabric / Finish:**



Willow (WL)



Frosty White (488)

**WEBSITE:** <https://www.kimballinternational.com/all/specstudio-visualizer/view-all/Swift.html>

**NOTES:**

*\*NET COST WAS CALCULATED BY TAKING 20% OFF RETAIL COST*



**PROJECT NUMBER:** IND2237C DESIGN STUDIO 3

**PROJECT NAME:** Covenant House

**PROJECT LOCATION:** Reception

**DESIGNER:** Skylar Greenberg

**TAG:** T-2

**QUANTITY:** 1

**LOCATION:** Reception

**MANUFACTURER INFORMATION:**

*HBF*

*900 12<sup>th</sup> ST Dr NW*

*Hickory, NC 28601*

**DESCRIPTION:** Coffee Table

**DIMENSIONS:** 60" W x 35 1/4" D x 11 1/2" H

**MANUFACTURER:** National Office Furniture

**PRODUCT LINE:** Double Take

**FINISH/COLOR:** PSS, GBZ

**FABRIC:** N/A

**PATTERN:** N / A

**REPEAT:** N/A

**MATERIAL CONTENT:** N/A

**RETAIL COST:**

**NET COST:**

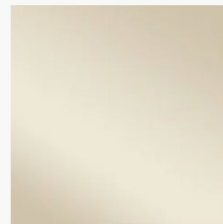
**EXTENDED COST:**

**Image:**



**Fabric / Finish:**

**GLASS**



**GLASS -  
GBZ**

Bronze  
(GBZ)

**WEBSITE:** <https://www.hbf.com/products/tables/double-take-coffee-table>

**NOTES:**

*\*NET COST WAS CALCULATED BY TAKING 20% OFF RETAIL COST*



**PROJECT NUMBER:** IND2237C DESIGN STUDIO 3

**PROJECT NAME:** Covenant House

**PROJECT LOCATION:** Reception

**DESIGNER:** Skylar Greenberg

**TAG:** T-3

**QUANTITY:** 1

**LOCATION:**

**MANUFACTURER INFORMATION:**

*National Office Furniture*

*1610 Royal St, Jasper, IN 47546*

*(800) 482.1717*

**DESCRIPTION:** Modular Reception Desk

**DIMENSIONS:**

**MANUFACTURER:** National Office Furniture

**PRODUCT LINE:** Swift

**FINISH/COLOR:** 497 Metal Legs

**FABRIC:** Sky (13118)

**PATTERN:** N / A

**REPEAT:** N/A

**MATERIAL CONTENT:** 100% Polyester (60% post-consumer recycled)

**RETAIL COST:**

**NET COST:**

**EXTENDED COST:**

**Image:**



**Fabric / Finish:**

**WEBSITE:** <https://www.hbf.com/products/tables/double-take-side-table>

**NOTES:**

*\*NET COST WAS CALCULATED BY TAKING 20% OFF RETAIL COST*

YOUR LOGO

**PROJECT NUMBER:** IND2237C DESIGN STUDIO 3

**PROJECT NAME:** Covenant House

**PROJECT LOCATION:** Reception

**DESIGNER:** Skylar Greenberg

**TAG:** CH-1

**QUANTITY:** 2

**LOCATION:** Reception Lounge Chairs

**MANUFACTURER INFORMATION:**

**ERG INTERNATIONAL**

**361 North Bernoulli Circle,**

**Oxnard, California 93030**

**(805) 981.9978**

**Sales@erginternational.com**

**DESCRIPTION:** 2280 Lounge Chair

**DIMENSIONS:** W X D X H

**MANUFACTURER:**

**PRODUCT LINE:**

**FINISH/COLOR:**

**FABRIC:**

**PATTERN:**

**REPEAT:**

**MATERIAL CONTENT:**

**RETAIL COST:**

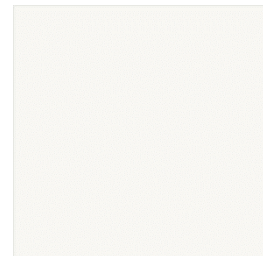
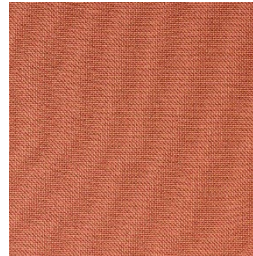
**NET COST:**

**EXTENDED COST:**

**Image:**



**Fabric / Finish:**



**WEBSITE:** <https://erginternational.com/charlotte.php>

**NOTES:**

*\*NET COST WAS CALCULATED BY TAKING 20% OFF RETAIL COST*



# **MULTI PURPOSE ROOM**



**PROJECT NUMBER:** IND2237C DESIGN STUDIO 3

**PROJECT NAME:** Covenant House

**PROJECT LOCATION:** Multi Purpose Room & Conference Room

**DESIGNER:** Skylar Greenberg

**TAG:** T-4

**QUANTITY:** 3

**LOCATION:** Multi Purpose Room & Conference

**MANUFACTURER INFORMATION:**

*Special T*

*11820 Wills Rd, Suite 140*

*Alpharetta, GA 30009*

**DESCRIPTION:** Conference Table

**DIMENSIONS:** 48" x 120"

**MANUFACTURER:** Special T

**PRODUCT LINE:** Oscar

**FINISH/COLOR:** Solid Laminate- Pewter

**Brush & Base in** Metallic Gold

**FABRIC:** Sky (13118)

**PATTERN:** N / A

**REPEAT:** N/A

**MATERIAL CONTENT:**

**RETAIL COST:**

**NET COST:**

**EXTENDED COST:**

**Image:**



**Fabric / Finish:**



**WEBSITE:** [Oscar - Conference Table Special-T \(specialt.net\)](http://specialt.net)

**NOTES:**

*\*NET COST WAS CALCULATED BY TAKING 20% OFF RETAIL COST*



**PROJECT NUMBER:** IND2237C DESIGN STUDIO 3

**PROJECT NAME:** Covenant House

**PROJECT LOCATION:** Multi Purpose Room & Conference Room

**DESIGNER:** Skylar Greenberg

**TAG:** CH-3

**QUANTITY:** 32

**LOCATION:** Multi Purpose Room & Conference

**MANUFACTURER INFORMATION:**

*Bernhardt Design*

*1839 Morganton Blvd, Lenoir, NC 28645*

*(828) 758.9811*

**DESCRIPTION:** Mid Back Armless Swivel Chair

**DIMENSIONS:** 21 1/4" W x 24" D x 25 5/8" H

**MANUFACTURER:** Bernhardt Design

**PRODUCT LINE:** L.A.M.

**FINISH/COLOR:** Aluminum

**FABRIC:** Dove 3838-000

**PATTERN:** N / A

**REPEAT:** N/A

**MATERIAL CONTENT:** 100% Polyester (60% post-consumer recycled)

**RETAIL COST:**

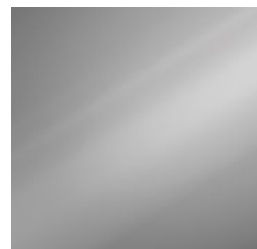
**NET COST:**

**EXTENDED COST:**

**Image:**



**Fabric / Finish:**



**WEBSITE:** <https://bernhardtdesign.com/furniture/l-a-m/>

**NOTES:**

*\*NET COST WAS CALCULATED BY TAKING 20% OFF RETAIL COST*



**PROJECT NUMBER:** IND2237C DESIGN STUDIO 3

**PROJECT NAME:** Covenant House

**PROJECT LOCATION:** Covenant House Office

**DESIGNER:** Skylar Greenberg

**TAG:** CH-4

**QUANTITY:** 5

**LOCATION:** Multi-Purpose Room

**MANUFACTURER INFORMATION:**

**ERG INTERNATIONAL**

361 North Bernoulli Circle,

Oxnard, California 93030

(805) 981.9978

Sales@erginternational.com

**DESCRIPTION:** Stackable chair / 7460

**DIMENSIONS:** 19.5" W x 21" D x 32 ½" H

**MANUFACTURER:** ERG International

**PRODUCT LINE:** Bruno

**FINISH/COLOR:** White

**FABRIC:** AC-63524 Tangerine #5

**PATTERN:** N / A

**REPEAT:** N/A

**MATERIAL CONTENT:** 100% Polyester back

**RETAIL COST:**

**NET COST:**

**EXTENDED COST:**

**Image:**



**Fabric / Finish:**



white



Insight  
AC-63524 Tangerine #5

**WEBSITE:** <https://erginternational.com/bruno.php?incomingCategory=brunoStacking01>

**NOTES:**

*\*NET COST WAS CALCULATED BY TAKING 20% OFF RETAIL COST*





**PROJECT NUMBER:** IND2237C DESIGN STUDIO 3

**PROJECT NAME:** Covenant House

**PROJECT LOCATION:** Covenant House Office

**DESIGNER:** Skylar Greenberg

**TAG:** ST-1

**QUANTITY:** 2

**LOCATION:** Multi-Purpose Room & Conference Room

**MANUFACTURER INFORMATION:**

*HBF*

*900 12th ST Dr NW*

*Hickory, NC 28601*

**DESCRIPTION:** Media Cart

**DIMENSIONS:** 23" W x 21" D x 35 1/4" H

**MANUFACTURER:** HBF

**PRODUCT LINE:** Linea Media Cart

**FINISH/COLOR:** Oak / Light Rift Oak

**FABRIC:** N/A

**PATTERN:** N / A

**REPEAT:** N/A

**MATERIAL CONTENT:**

**RETAIL COST:**

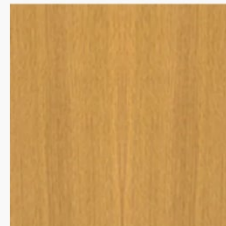
**NET COST:**

**EXTENDED COST:**

**Image:**



**Fabric / Finish:**



OAK - RF301

Light Rift Oak  
(RF301)

**WEBSITE:** <https://www.hbf.com/products/storage-dividers/linea-media-cart#available-option>

**NOTES:**

*\*NET COST WAS CALCULATED BY TAKING 20% OFF RETAIL COST*



**PROJECT NUMBER:** IND2237C DESIGN STUDIO 3

**PROJECT NAME:** Covenant House

**PROJECT LOCATION:** Covenant House Office

**DESIGNER:** Skylar Greenberg

**TAG:** P-1

**QUANTITY:** 2

**LOCATION:** Multi-Purpose Room & Conference Room

**MANUFACTURER INFORMATION:**

*HBF*

*900 12th ST Dr NW*

*Hickory, NC 28601*

**DESCRIPTION:** Lectern

**DIMENSIONS:** 29 3/4" W x 27 5/16" D x 46 1/16" H

**MANUFACTURER:** HBF

**PRODUCT LINE:** LOGICmeet

**FINISH/COLOR:** Alabaster White

**FABRIC:** N/A

**PATTERN:** N / A

**REPEAT:** N/A

**MATERIAL CONTENT:**

**RETAIL COST:**

**NET COST:**

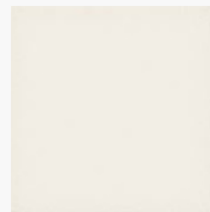
**EXTENDED COST:**

**Image:**



**Fabric / Finish:**

**SOLID SURFACE**



**SOLID SURFACE  
- SAW**

Alabaster White  
(SAW)

**WEBSITE:** <https://www.hbf.com/products/storage-dividers/logicmeet-lecterns-shroud>

**NOTES:**

*\*NET COST WAS CALCULATED BY TAKING 20% OFF RETAIL COST*



# WORKROOM



**PROJECT NUMBER:** IND2237C DESIGN STUDIO 3

**PROJECT NAME:** Covenant House

**PROJECT LOCATION:** Covenant House Office

**DESIGNER:** Skylar Greenberg

**TAG:** CH-5

**QUANTITY:** 6

**LOCATION:** Workroom and Coffee Bar

**MANUFACTURER INFORMATION:**

*HBF*

*900 12th ST Dr NW*

*Hickory, NC 28601*

**DESCRIPTION:** Stool

**DIMENSIONS:** 19.75" W x 20.25" D x 39.75" H

**MANUFACTURER:** Allermuir

**PRODUCT LINE:** Cardita

**FINISH/COLOR:** White Oak

**FABRIC:** Blue Skies

**PATTERN:** N / A

**REPEAT:** N/A

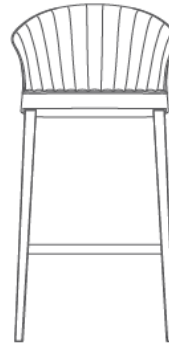
**MATERIAL CONTENT:** N/A

**RETAIL COST:**

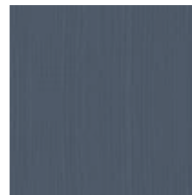
**NET COST:**

**EXTENDED COST:**

**Image:**



**Fabric / Finish:**



Blue Skies



White Oak

**WEBSITE:** <https://www.allermuir.com/us/products/stools/cardita>

**NOTES:**

*\*NET COST WAS CALCULATED BY TAKING 20% OFF RETAIL COST*



# **GENERAL OFFICES**



**PROJECT NUMBER:** IND2237C DESIGN STUDIO 3

**PROJECT NAME:** Covenant House

**PROJECT LOCATION:** Covenant House Office

**DESIGNER:** Skylar Greenberg

**TAG:** DK-2

**QUANTITY:** 14

**LOCATION:** General Offices

**MANUFACTURER INFORMATION:**

*Herman Miller INC  
855 East Main Ave  
Zeeland, MI 49464*

**DESCRIPTION:** Rectangle Table with C-foot

**DIMENSIONS:** 36"W x 24"D x 28.75"H

**MANUFACTURER:** Herman Miller

**PRODUCT LINE:** Renew Sit-To-Stand

**FINISH/COLOR:** Studio White, LBQ

**FABRIC:** N/A

**PATTERN:** N / A

**REPEAT:** N/A

**MATERIAL CONTENT:**

**RETAIL COST:**

**NET COST:**

**EXTENDED COST:**

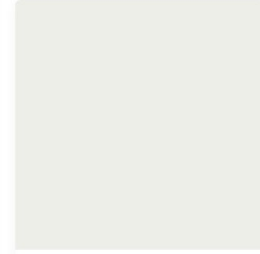
**Image:**



**Fabric / Finish:**



Patterned Laminate  
Twill White, LBQ



Finish  
Studio White, 98

**WEBSITE:** <https://www.hermanmiller.com/resources/3d-models-and-planning-tools/product-models/individual/renew-sit-to-stand-table-rectangular-c-foot/>

**NOTES:**

*\*NET COST WAS CALCULATED BY TAKING 20% OFF RETAIL COST*



**PROJECT NUMBER:** IND2237C DESIGN STUDIO 3

**PROJECT NAME:** Covenant House

**PROJECT LOCATION:** Covenant House Office

**DESIGNER:** Skylar Greenberg

**TAG:** ST-2

**QUANTITY:** 15

**LOCATION:** General Office

**MANUFACTURER INFORMATION:**

*Watson Furniture  
26246 Twelve Trees Lane NW  
Poulsbo, WA 98370*

**DESCRIPTION:** PED Box File Mobile

**DIMENSIONS:** 12"W x 20" D x 22"H

**MANUFACTURER:** Watson Furniture

**PRODUCT LINE:** Zo Storage

**FINISH/COLOR:** Frosty White

**FABRIC:** N/A

**PATTERN:** N / A

**REPEAT:** N/A

**MATERIAL CONTENT:**

**RETAIL COST:**

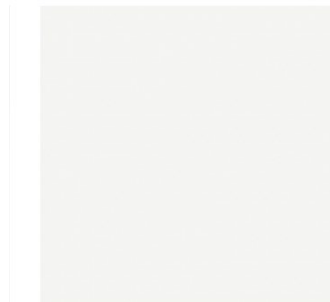
**NET COST:**

**EXTENDED COST:**

**Image:**



**Fabric / Finish:**



Frosty White

**WEBSITE:** <https://www.watsonfurniture.com/products/zo-storage>

**NOTES:**

*\*NET COST WAS CALCULATED BY TAKING 20% OFF RETAIL COST*



**PROJECT NUMBER:** IND2237C DESIGN STUDIO 3

**PROJECT NAME:** Covenant House

**PROJECT LOCATION:** Covenant House Office

**DESIGNER:** Skylar Greenberg

**TAG:** DK-3

**QUANTITY:** 8

**LOCATION:** General Offices

**MANUFACTURER INFORMATION:**

*Herman Miller INC  
855 East Main Ave  
Zeeland, MI 49464*

**DESCRIPTION:** Rectangle Table Extended Corner

**DIMENSIONS:** 42" W x 24" D x 28.75" H

**MANUFACTURER:** Herman Miler

**PRODUCT LINE:** Renew Sit-To-Stand

**FINISH/COLOR:** Studio White, LBQ

**FABRIC:** N/A

**PATTERN:** N / A

**REPEAT:** N/A

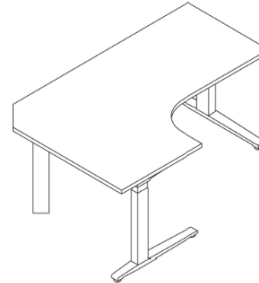
**MATERIAL CONTENT:**

**RETAIL COST:**

**NET COST:**

**EXTENDED COST:**

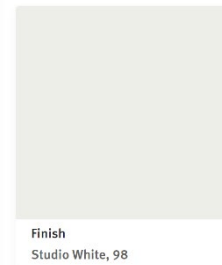
**Image:**



**Fabric / Finish:**



Patterned Laminate  
Twill White, LBQ



Finish  
Studio White, 98

**WEBSITE:** <https://www.hermanmiller.com/resources/3d-models-and-planning-tools/product-models/individual/renew-sit-to-stand-table-extended-corner/>

**NOTES:**

*\*NET COST WAS CALCULATED BY TAKING 20% OFF RETAIL COST*





**PROJECT NUMBER:** IND2237C DESIGN STUDIO 3

**PROJECT NAME:** Covenant House

**PROJECT LOCATION:** Covenant House Office

**DESIGNER:** Skylar Greenberg

**TAG:** DK-4

**QUANTITY:** 1

**LOCATION:** General Offices

**MANUFACTURER INFORMATION:**

**ERG INTERNATIONAL**

**361 North Bernoulli Circle,**

**Oxnard, California 93030**

**(805) 981.9978**

**Sales@erginternational.com**

**DESCRIPTION:** Rectangle Table with C-Foot

**DIMENSIONS:** 84" W x 24" D x 28.75" H

**MANUFACTURER:** Herman Miller

**PRODUCT LINE:** Renew Sit-To-Stand

**FINISH/COLOR:** Studio White, LBQ

**FABRIC:** N/A

**PATTERN:** N / A

**REPEAT:** N/A

**MATERIAL CONTENT:** N/A

**RETAIL COST:**

**NET COST:**

**EXTENDED COST:**

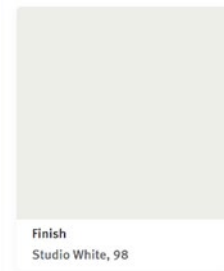
**Image:**



**Fabric / Finish:**



Patterned Laminate  
Twill White, LBQ



Finish  
Studio White, 98

**WEBSITE:** [Renew Sit-to-Stand Table-Rectangular-C Foot - 3D Product Models - Herman Miller](#)

**NOTES:**

*\*NET COST WAS CALCULATED BY TAKING 20% OFF RETAIL COST*



**PROJECT NUMBER:** IND2237C DESIGN STUDIO 3

**PROJECT NAME:** Covenant House

**PROJECT LOCATION:** Covenant House Office

**DESIGNER:** Skylar Greenberg

**TAG:** CH-6

**QUANTITY:** 15

**LOCATION:** General Offices

**MANUFACTURER INFORMATION:**

*Herman Miller INC  
855 East Main Ave  
Zeeland, MI 49464*

**DESCRIPTION:** Swivel Chair / Alta 580K

**DIMENSIONS:** 27" W x 27" D x 33 ¾" H

**MANUFACTURER:** Bernhardt

**PRODUCT LINE:** Alta

**FINISH/COLOR:** Base: Aluminum

**FABRIC:** Elan

**PATTERN:** N / A

**REPEAT:** N/A

**MATERIAL CONTENT:**

**RETAIL COST:**

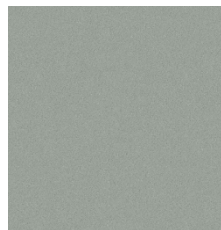
**NET COST:**

**EXTENDED COST:**

**Image:**



**Fabric / Finish:**



**WEBSITE:** <https://bernhardtdesign.com/furniture/alta/>

**NOTES:**

*\*NET COST WAS CALCULATED BY TAKING 20% OFF RETAIL COST*



**PROJECT NUMBER:** IND2237C DESIGN STUDIO 3

**PROJECT NAME:** Covenant House

**PROJECT LOCATION:** Covenant House Office

**DESIGNER:** Skylar Greenberg

**TAG:** ST-3

**QUANTITY:** 2

**LOCATION:** General Offices

**MANUFACTURER INFORMATION:**

.mdd.eu

1 (201) 933. 7787

Sales-usa@mdd.pl

**DESCRIPTION:** Storage Standard 37880

**DIMENSIONS:** 17" W x 39.4" D x 44.4" H

**MANUFACTURER:** MDD

**PRODUCT LINE:** Standard

**FINISH/COLOR:** White Pastel, Aluminum

Satinato

**FABRIC:** N/A

**PATTERN:** N / A

**REPEAT:** N/A

**MATERIAL CONTENT:**

**RETAIL COST:**

**NET COST:**

**EXTENDED COST:**

**Image:**



**Fabric / Finish:**

**WEBSITE:** <https://mdd.eu/us/cabinets-and-pedestals/standard-file-cabinet/?preconf=3788>

**NOTES:**

*\*NET COST WAS CALCULATED BY TAKING 20% OFF RETAIL COST*



# **EXECUTIVE OFFICES**



**PROJECT NUMBER:** IND2237C DESIGN STUDIO 3

**PROJECT NAME:** Covenant House

**PROJECT LOCATION:** Covenant House Office

**DESIGNER:** Skylar Greenberg

**TAG:** CH-7

**QUANTITY:** 1

**LOCATION:** Executive Office #1

**MANUFACTURER INFORMATION:**

ACERAY LLC  
4465 Kipling St. Suite 202  
Wheat Ridge, CO 80033  
303.733.3404  
Info@aceray.com

**DESCRIPTION:** Swivel Chair / DADO-SWIV4P

**DIMENSIONS:** 32 ½" W x 30" D x 47 ½" H

**MANUFACTURER:** Aceray

**PRODUCT LINE:** DADO

**FINISH/COLOR:** Chrome Metal

**FABRIC:** 5

**PATTERN:** N / A

**REPEAT:** N/A

**MATERIAL CONTENT:** Vinyl PLANET grade A

**RETAIL COST:**

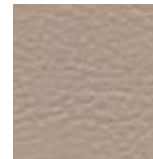
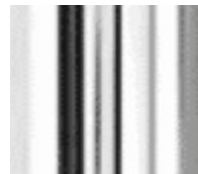
**NET COST:**

**EXTENDED COST:**

**Image:**



**Fabric / Finish:**



**WEBSITE:** <https://aceray.com/product/dada-swiv4p/>

**NOTES:**

*\*NET COST WAS CALCULATED BY TAKING 20% OFF RETAIL COST*



**PROJECT NUMBER:** IND2237C DESIGN STUDIO 3

**PROJECT NAME:** Covenant House

**PROJECT LOCATION:** Covenant House Office

**DESIGNER:** Skylar Greenberg

**TAG:** CH-8

**QUANTITY:** 2

**LOCATION:** Executive Office #1

**MANUFACTURER INFORMATION:**  
*Nienkamper International Inc*  
*1 (201) 933. 7787*  
*Sales-usa@mdd.pl*

**DESCRIPTION:** Guest Chair / KUSH10360

**DIMENSIONS:** 28" W x 25" D x 34" H

**MANUFACTURER:** Knoll

**PRODUCT LINE:** Kush

**FINISH/COLOR:** Black Powder Coat

**FABRIC:** EC360 Winter White

**PATTERN:** N / A

**REPEAT:** N/A

**MATERIAL CONTENT:** Leather-Ecopell

**RETAIL COST:**

**NET COST:**

**EXTENDED COST:**

**Image:**



**Fabric / Finish:**



**WEBSITE:** <https://www.nienkamper.com/products/kush#resourceanchor>

**NOTES:**

*\*NET COST WAS CALCULATED BY TAKING 20% OFF RETAIL COST*



**PROJECT NUMBER:** IND2237C DESIGN STUDIO 3

**PROJECT NAME:** Covenant House

**PROJECT LOCATION:** Covenant House Office

**DESIGNER:** Skylar Greenberg

**TAG:** CH-9

**QUANTITY:** 1

**LOCATION:** Executive Office #2

**MANUFACTURER INFORMATION:**

*HBF*

*900 12th ST Dr NW*

*Hickory, NC 28601*

**DESCRIPTION:** High Back Channel Stitched Swivel Chair

**DIMENSIONS:** 24" W x 26" D x 41 ½"-44 ½" H

**MANUFACTURER:** HFB

**PRODUCT LINE:** Cadre

**FINISH/COLOR:** Polished Aluminum

**FABRIC:** Merci Boucle 955-56

**PATTERN:** N / A

**REPEAT:** N/A

**MATERIAL CONTENT:** 100% Polyester face

**RETAIL COST:**

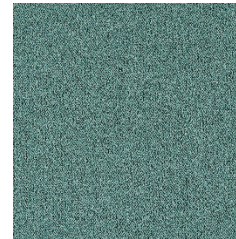
**NET COST:**

**EXTENDED COST:**

**Image:**



**Fabric / Finish:**



**WEBSITE:** <https://www.hbf.com/products/seating/cadre-high-back-channel-stitched#materials--finishes>

**NOTES:**

*\*NET COST WAS CALCULATED BY TAKING 20% OFF RETAIL COST*



**PROJECT NUMBER:** IND2237C DESIGN STUDIO 3

**PROJECT NAME:** Covenant House

**PROJECT LOCATION:** Covenant House Office

**DESIGNER:** Skylar Greenberg

**TAG:** CH-10

**QUANTITY:** 2

**LOCATION:** Executive Office #2

**MANUFACTURER INFORMATION:**

*HBF*

*900 12th ST Dr NW*

*Hickory, NC 28601*

**DESCRIPTION:** Freestanding Guest Chair / OH24ERG

**DIMENSIONS:** 24" W x 27" D x 18" H

**MANUFACTURER:** Versteel

**PRODUCT LINE:** OH

**FINISH/COLOR:** Alloy Metal Finish

**FABRIC:** Polygon Ocean

**PATTERN:** N / A

**REPEAT:** N/A

**MATERIAL CONTENT:** Polygon

**RETAIL COST:**

**NET COST:**

**EXTENDED COST:**

**Image:**



**Fabric / Finish:**



**WEBSITE:** <https://www.versteel.com/product/oh/>

**NOTES:**

*\*NET COST WAS CALCULATED BY TAKING 20% OFF RETAIL COST*





**PROJECT NUMBER:** IND2237C DESIGN STUDIO 3

**PROJECT NAME:** Covenant House

**PROJECT LOCATION:** Covenant House Office

**DESIGNER:** Skylar Greenberg

**TAG:** DK-5

**QUANTITY:** 4

**LOCATION:** Executive Offices

**MANUFACTURER INFORMATION:**

*Watson Furniture  
26246 Twelve Trees  
Lane NW Poulsbo, WA 98370  
360.394.1300*

**DESCRIPTION:** Desk/ 3APD2D963696R-TD

**DIMENSIONS:** 72" W x 36" D x 29 ½" H

**MANUFACTURER:** Watson Furniture

**PRODUCT LINE:** Tia Office

**FINISH/COLOR:** Phantom Ecru, Frosty White

**FABRIC:** N/A

**PATTERN:** N / A

**REPEAT:** N/A

**MATERIAL CONTENT:** 100% Polyester face

**RETAIL COST:**

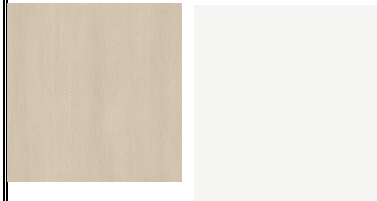
**NET COST:**

**EXTENDED COST:**

**Image:**



**Fabric / Finish:**



**WEBSITE:** <https://www.watsonfurniture.com/products/tia-office>

**NOTES:**

*\*NET COST WAS CALCULATED BY TAKING 20% OFF RETAIL COST*



**PROJECT NUMBER:** IND2237C DESIGN STUDIO 3

**PROJECT NAME:** Covenant House

**PROJECT LOCATION:** Covenant House Office

**DESIGNER:** Skylar Greenberg

**TAG:** CH-11

**QUANTITY:** 2

**LOCATION:** Executive Office #3

**MANUFACTURER INFORMATION:**

**ERG INTERNATIONAL**

361 North Bernoulli Circle,

Oxnard, California 93030

(805) 981.9978

Sales@erginternational.com

**DESCRIPTION:** High Back Guest Chair / 2380

**DIMENSIONS:** 23.75" W x 29" D x 42.75" H

**MANUFACTURER:** ERG International

**PRODUCT LINE:** Logan

**FINISH/COLOR:** Powder Coat Finish

**FABRIC:** Lambeth MF08

**PATTERN:** N / A

**REPEAT:** N/A

**MATERIAL CONTENT:** 100% Polyester face

**RETAIL COST:**

**NET COST:**

**EXTENDED COST:**

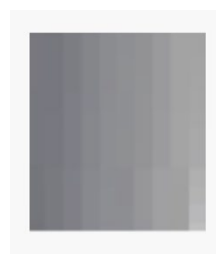
**Image:**



**Fabric / Finish:**



Lambeth  
MLF08



**WEBSITE:** <https://erginternational.com/logan.php?incomingCategory=loganLounge05>

**NOTES:**

*\*NET COST WAS CALCULATED BY TAKING 20% OFF RETAIL COST*



**PROJECT NUMBER:** IND2237C DESIGN STUDIO 3

**PROJECT NAME:** Covenant House

**PROJECT LOCATION:** Covenant House Office

**DESIGNER:** Skylar Greenberg

**TAG:** CH-12

**QUANTITY:** 1

**LOCATION:** Executive Office #3

**MANUFACTURER INFORMATION:**

**ERG INTERNATIONAL**

*361 North Bernoulli Circle,*

*Oxnard, California 93030*

*(805) 981.9978*

*Sales@erginternational.com*

**DESCRIPTION:** 5 star swivel base with casters

**DIMENSIONS:** 27.5" W x 27.5" D x 41.5-43.75" H

**MANUFACTURER:** ERG International

**PRODUCT LINE:** logan

**FINISH/COLOR:** Powder coat finish

**FABRIC:** 6688 TANGERINE

**PATTERN:** N / A

**REPEAT:** N/A

**MATERIAL CONTENT:** 100% Polyester face

**RETAIL COST:**

**NET COST:**

**EXTENDED COST:**

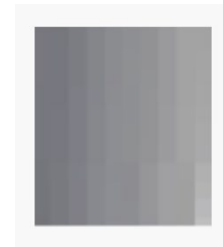
**Image:**



**Fabric / Finish:**



6688  
TANGERINE



**WEBSITE:** <https://erginternational.com/logan.php?incomingCategory=loganLounge05>

**NOTES:**

*\*NET COST WAS CALCULATED BY TAKING 20% OFF RETAIL COST*



**PROJECT NUMBER:** IND2237C DESIGN STUDIO 3

**PROJECT NAME:** Covenant House

**PROJECT LOCATION:** Covenant House Office

**DESIGNER:** Skylar Greenberg

**TAG:** CH-13

**QUANTITY:** 1

**LOCATION:** Executive Office #4

**MANUFACTURER INFORMATION:**

*9 to 5 Seating*

*3211 Jack Northrop Ave, Hawthorne, CA 90250*

*(888) 925. 7328*

**DESCRIPTION:** High back 5 star swivel base / 9380BA22

**DIMENSIONS:** 27" W x 24" D x 42.5" H

**MANUFACTURER:** 9 to 5 seating

**PRODUCT LINE:** ellie

**FINISH/COLOR:** white

**FABRIC:** Merci Lena white

**PATTERN:** N / A

**REPEAT:** N/A

**MATERIAL CONTENT:** 1

**RETAIL COST:**

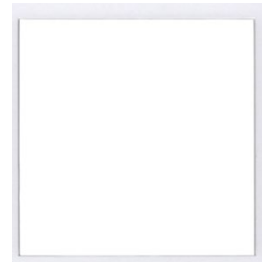
**NET COST:**

**EXTENDED COST:**

**Image:**



**Fabric / Finish:**



**WEBSITE:** [https://9to5seating.com/product-detail/?sort&chair\\_id=157](https://9to5seating.com/product-detail/?sort&chair_id=157)

**NOTES:**

*\*NET COST WAS CALCULATED BY TAKING 20% OFF RETAIL COST*



**PROJECT NUMBER:** IND2237C DESIGN STUDIO 3

**PROJECT NAME:** Covenant House

**PROJECT LOCATION:** Covenant House Office

**DESIGNER:** Skylar Greenberg

**TAG:** CH-14

**QUANTITY:** 2

**LOCATION:** Executive Office #4

**MANUFACTURER INFORMATION:**

*Via Seating*

*Via Seating 205 Vista Boulevard, Sparks, Nevada  
89434*

**DESCRIPTION:** Guest soft seating chair with parallel

stitch / 938-4ms- felt-fa-gr 6

**DIMENSIONS:** 27" W x 19" D x 24.5" H

**MANUFACTURER:** via seating

**PRODUCT LINE:** Muir

**FINISH/COLOR:** Silver Wire

**FABRIC:** Ultraleather pro- Blueberry

**PATTERN:** N / A

**REPEAT:** N/A

**MATERIAL CONTENT:** Vinyl

**RETAIL COST:**

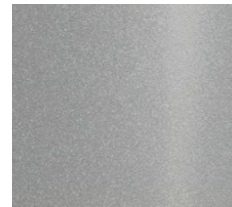
**NET COST:**

**EXTENDED COST:**

**Image:**



**Fabric / Finish:**



Pattern: ultraleather pro  
Colorway: blueberry

**WEBSITE:** <https://viaseating.com/series/muir-chair/>

**NOTES:** BIFMA Certification, Clean Air certification

*\*NET COST WAS CALCULATED BY TAKING 20% OFF RETAIL COST*



**PROJECT NUMBER:** IND2237C DESIGN STUDIO 3

**PROJECT NAME:** Covenant House

**PROJECT LOCATION:** Covenant House Office

**DESIGNER:** Skylar Greenberg

**TAG:** CR-1

**QUANTITY:** 5

**LOCATION:** Executive Offices and Conference Room

**MANUFACTURER INFORMATION:**

*Nucraft*

*5151 West River Drive, Comstock, MI 49321*

*(616) 784.6016*

**DESCRIPTION:** credenza / FWWC-5424-W

**DIMENSIONS:** 54" W x 20" D x 24.5" H

**MANUFACTURER:** Nucraft

**PRODUCT LINE:** flow

**FINISH/COLOR:** Linda veneer top/ euro birch,

ABS-ROI whitecap on edge band

**FABRIC:** N/A

**PATTERN:** N / A

**REPEAT:** N/A

**MATERIAL CONTENT:** 100% Polyester face

**RETAIL COST:**

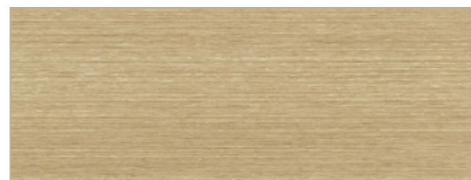
**NET COST:**

**EXTENDED COST:**

**Image:**



**Fabric / Finish:**



Linea - Mog Euro Birch Linea Veneer

**WEBSITE:** <https://www.nucraft.com/products/flow-credenzas>

**NOTES:** FSC Certification, Low-Emitting Materials (certified to ANSI/BIFMA X.71)

*\*NET COST WAS CALCULATED BY TAKING 20% OFF RETAIL COST*



# TEAM AREA



**PROJECT NUMBER:** IND2237C DESIGN STUDIO 3

**PROJECT NAME:** Covenant House

**PROJECT LOCATION:** Covenant House Office

**DESIGNER:** Skylar Greenberg

**TAG:** T-5

**QUANTITY:** 8

**LOCATION:** Team Area and Cafe

**MANUFACTURER INFORMATION:**

*Bernhardt Design*

*1839 Morganton Blvd, Lenoir, NC 28645*

*(828) 758.9811*

**DESCRIPTION:** Round Table Top

**DIMENSIONS:** 48" W x 29 ½" H

**MANUFACTURER:** Bernhardt

**PRODUCT LINE:** Anza

**FINISH/COLOR:** 686

**FABRIC:** N/A

**PATTERN:** N / A

**REPEAT:** N/A

**MATERIAL CONTENT:** Woodgrain Laminate

**RETAIL COST:**

**NET COST:**

**EXTENDED COST:**

**Image:**



**Fabric / Finish:**



**WEBSITE:** <https://bernhardtdesign.com/furniture/anza/?r-index=multipurpose>

**NOTES:** Level 2 Certification, and SCS Indoor Advantage.

*\*NET COST WAS CALCULATED BY TAKING 20% OFF RETAIL COST*





**PROJECT NUMBER:** IND2237C DESIGN STUDIO 3

**PROJECT NAME:** Covenant House

**PROJECT LOCATION:** Covenant House Office

**DESIGNER:** Skylar Greenberg

**TAG:** S-4

**QUANTITY:** 7

**LOCATION:** Team Area

**MANUFACTURER INFORMATION:**

*Steel Case*

*901 44<sup>th</sup> St SE, Grand Rapids, Michigan 49508*

*(616) 247.2710*

**DESCRIPTION:** Single Lounge Seating

**DIMENSIONS:** 36" W x 36" D x 32"H

**MANUFACTURER:** Steel Case

**PRODUCT LINE:** Belle

**FINISH/COLOR:** N/A

**FABRIC:** Fomo 3931

**PATTERN:** N / A

**REPEAT:** N/A

**MATERIAL CONTENT:** 100% Polyester face

**RETAIL COST:**

**NET COST:**

**EXTENDED COST:**

**Image:**



**Fabric / Finish:**



**WEBSITE:** <https://www.steelcase.com/products/lounge-systems/west-elm-work-belle/?draw>

**NOTES:** BIFMA Compliant, Product weight is 169 lbs

*\*NET COST WAS CALCULATED BY TAKING 20% OFF RETAIL COST*



**PROJECT NUMBER:** IND2237C DESIGN STUDIO 3

**PROJECT NAME:** Covenant House

**PROJECT LOCATION:** Covenant House Office

**DESIGNER:** Skylar Greenberg

**TAG:** S-5

**QUANTITY:** 2

**LOCATION:** Executive Office #4

**MANUFACTURER INFORMATION:**

*Steel Case*

*901 44<sup>th</sup> St SE, Grand Rapids, Michigan 49508*

*(616) 247.2710*

**DESCRIPTION:** Corner Lounge

**DIMENSIONS:** 45" W x 45"D x 32" H

**MANUFACTURER:** Steel Case

**PRODUCT LINE:** Belle

**FINISH/COLOR:** N/A

**FABRIC:** Fomo 3931

**PATTERN:** N / A

**REPEAT:** N/A

**MATERIAL CONTENT:** N/A

**RETAIL COST:**

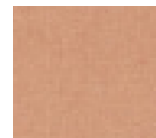
**NET COST:**

**EXTENDED COST:**

**Image:**



**Fabric / Finish:**



**WEBSITE:** <https://www.steelcase.com/products/lounge-systems/west-elm-work-belle/?draw>

**NOTES:** BIFMA Compliant, Product weight is 169 lbs

*\*NET COST WAS CALCULATED BY TAKING 20% OFF RETAIL COST*



**PROJECT NUMBER:** IND2237C DESIGN STUDIO 3

**PROJECT NAME:** Covenant House

**PROJECT LOCATION:** Covenant House Office

**DESIGNER:** Skylar Greenberg

**TAG:** CH-16

**QUANTITY:** 18

**LOCATION:** Team Area and Cafe

**MANUFACTURER INFORMATION:**

**ERG INTERNATIONAL**

361 North Bernoulli Circle,

Oxnard, California 93030

(805) 981.9978

Sales@erginternational.com

**DESCRIPTION:** 4 Star High Swivel Chair with Glides

**DIMENSIONS:** 24 1/2" W x 23" D x 30.25" H

**MANUFACTURER:** ERG International

**PRODUCT LINE:** Owen

**FINISH/COLOR:** Gold Coast Charlotte & Mario

**FABRIC:** Anodised PAT32

**PATTERN:** N / A

**REPEAT:** N/A

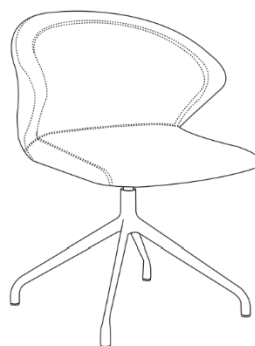
**MATERIAL CONTENT:**

**RETAIL COST:**

**NET COST:**

**EXTENDED COST:**

**Image:**



**Fabric / Finish:**



**WEBSITE:** <https://erginternational.com/owen.php?incomingCategory=owenSwivel03>

**NOTES:**

\*NET COST WAS CALCULATED BY TAKING 20% OFF RETAIL COST



CAFÉ



**PROJECT NUMBER:** IND2237C DESIGN STUDIO 3

**PROJECT NAME:** Covenant House

**PROJECT LOCATION:** Covenant House Office

**DESIGNER:** Skylar Greenberg

**TAG:** CH-15

**QUANTITY:** 4

**LOCATION:** Cafe

**MANUFACTURER INFORMATION:**

ACERAY LLC  
4465 Kipling St. Suite 202  
Wheat Ridge, CO 80033  
303.733.3404  
Info@aceray.com

**DESCRIPTION:** Barstools/ Tabour-G5

**DIMENSIONS:** 15.5" W x 15.5" D x 30" H

**MANUFACTURER:** Aceray

**PRODUCT LINE:** Tabour

**FINISH/COLOR:** Brushed Brass

**FABRIC:** Subculture / Mineral

**PATTERN:** N / A

**REPEAT:** 27.37" V. 14.25" H

**MATERIAL CONTENT:** 95% Polyester face, 5% Linen

**RETAIL COST:**

**NET COST:**

**EXTENDED COST:**

**Image:**



**Fabric / Finish:**



**WEBSITE** <https://aceray.com/product/tabour-g5/>

**NOTES:**

\*NET COST WAS CALCULATED BY TAKING 20% OFF RETAIL COST



**PROJECT NUMBER:** IND2237C DESIGN STUDIO 3

**PROJECT NAME:** Covenant House

**PROJECT LOCATION:** Covenant House Office

**DESIGNER:** Skylar Greenberg

**TAG:** S-6

**QUANTITY:** 1

**LOCATION:** Cafe

**MANUFACTURER INFORMATION:**

KIMBALL INTERNATIONAL

1600 Royal Street

Jasper, IN 47546

**DESCRIPTION:** Curved right end section

**DIMENSIONS:** 47 1/4" W x 34 1/4" D x 30 1/4" H

**MANUFACTURER:** Kimball International

**PRODUCT LINE:** Entourage Modular

Lounge Seating

**FINISH/COLOR:** n/a

**FABRIC:** Coral

**PATTERN:** N / A

**REPEAT:** N/A

**MATERIAL CONTENT:** 100% Polyester face

**RETAIL COST:**

**NET COST:**

**EXTENDED COST:**

**Image:**



**Fabric / Finish:**



Coral (31714)

**WEBSITE:** <https://www.kimballinternational.com/all/applications/student-center/Entourage.html?cat=all-seating&subcat=all-lounge>

**NOTES:**

\*NET COST WAS CALCULATED BY TAKING 20% OFF RETAIL COST



**PROJECT NUMBER:** IND2237C DESIGN STUDIO 3

**PROJECT NAME:** Covenant House

**PROJECT LOCATION:** Covenant House Office

**DESIGNER:** Skylar Greenberg

**TAG:** S-7

**QUANTITY:** 4

**LOCATION:** Cafe

**MANUFACTURER INFORMATION:**

KIMBALL INTERNATIONAL  
1600 Royal Street  
Jasper, IN 47546

**DESCRIPTION:** Convex center section

**DIMENSIONS:** 71 3/4" W x 34 1/4" D x 30 1/4" H

**MANUFACTURER:** Kimball international

**PRODUCT LINE:** Entourage Modular

Lounge Seating

**FINISH/COLOR:** white

**FABRIC:** Coral

**PATTERN:** N / A

**REPEAT:** N/A

**MATERIAL CONTENT:** 100% Polyester face

**RETAIL COST:**

**NET COST:**

**EXTENDED COST:**

**Image:**



**Fabric / Finish:**



Coral (31714)

**WEBSITE:** <https://www.kimballinternational.com/all/applications/student-center/Entourage.html?cat=all-seating&subcat=all-lounge>

**NOTES:**

\*NET COST WAS CALCULATED BY TAKING 20% OFF RETAIL COST



**PROJECT NUMBER:** IND2237C DESIGN STUDIO 3

**PROJECT NAME:** Covenant House

**PROJECT LOCATION:** Covenant House Office

**DESIGNER:** Skylar Greenberg

**TAG:** S-8

**QUANTITY:** 3

**LOCATION:** Cafe

**MANUFACTURER INFORMATION:**

KIMBALL INTERNATIONAL  
1600 Royal Street  
Jasper, IN 47546

**DESCRIPTION:** Concave Center Section

**DIMENSIONS:** 71 3/4" W x 34 1/4" D x 30 1/4" H

**MANUFACTURER:** Kimball international

**PRODUCT LINE:** Entourage Modular

Lounge Seating

**FINISH/COLOR:** white

**FABRIC:** Coral

**PATTERN:** N / A

**REPEAT:** N/A

**MATERIAL CONTENT:** 100% Polyester face

**RETAIL COST:**

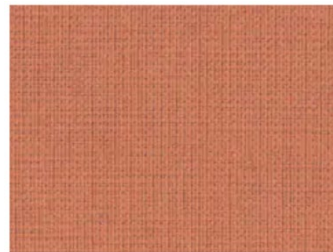
**NET COST:**

**EXTENDED COST:**

**Image:**



**Fabric / Finish:**



Coral (31714)

**WEBSITE:** <https://www.kimballinternational.com/all/applications/student-center/Entourage.html?cat=all-seating&subcat=all-lounge>

**NOTES:**

\*NET COST WAS CALCULATED BY TAKING 20% OFF RETAIL COST





**PROJECT NUMBER:** IND2237C DESIGN STUDIO 3

**PROJECT NAME:** Covenant House

**PROJECT LOCATION:** Covenant House Office

**DESIGNER:** Skylar Greenberg

**TAG:** S-9

**QUANTITY:** 1

**LOCATION:** Cafe

**MANUFACTURER INFORMATION:**

KIMBALL INTERNATIONAL  
1600 Royal Street  
Jasper, IN 47546

**DESCRIPTION:** Curved left end section

**DIMENSIONS:** 47 1/4" W x 34 1/4" D x 30 1/4" H

**MANUFACTURER:** Kimball international

**PRODUCT LINE:** Entourage Modular

Lounge Seating

**FINISH/COLOR:** white

**FABRIC:** Coral

**PATTERN:** N / A

**REPEAT:** N/A

**MATERIAL CONTENT:** 100% Polyester face

**RETAIL COST:**

**NET COST:**

**EXTENDED COST:**

**Image:**



**Fabric / Finish:**



Coral (31714)

**WEBSITE:** <https://www.kimballinternational.com/all/applications/student-center/Entourage.html?cat=all-seating&subcat=all-lounge>

**NOTES:**

\*NET COST WAS CALCULATED BY TAKING 20% OFF RETAIL COST



# **WALL FINISHES**



**PROJECT NUMBER:** IND2237C DESIGN STUDIO 3

**PROJECT NAME:** Covenant House

**PROJECT LOCATION:** Covenant House Office

**DESIGNER:** Skylar Greenberg

**TAG:** WC1

**QUANTITY:** N/A

**LOCATION:** West Reception

**MANUFACTURER INFORMATION:**

**DESCRIPTION:** wall covering

**DIMENSIONS:** 39.37" W x 0.39" D x 39.37" H

**MANUFACTURER:** Wall & Deco

**PRODUCT LINE:** Ma-Dama Polychrome

**FINISH/COLOR:** N/A

**FABRIC:** Merci Lena white

**PATTERN:** N / A

**REPEAT:** N/A

**MATERIAL CONTENT:** 100% Polyester face

**RETAIL COST:**

**NET COST:**

**EXTENDED COST:**

**Image:**



**Fabric / Finish:**

**WEBSITE:** <https://www.wallanddeco.com/en-us/catalog/families/contemporary-wallpaper-collection-2023-ma-dama/> **NOTES:**

*\*NET COST WAS CALCULATED BY TAKING 20% OFF RETAIL COST*



**PROJECT NUMBER:** IND2237C DESIGN STUDIO 3

**PROJECT NAME:** Covenant House

**PROJECT LOCATION:** Covenant House Office

**DESIGNER:** Skylar Greenberg

**TAG:** PT1

**QUANTITY:** N/A

**LOCATION:** Reception, Executive Offices, General offices,  
CC, SC

**MANUFACTURER INFORMATION:**

*Sherwin Williams*  
101 west Prospect Avenue  
Cleveland, OH 44115  
**DESCRIPTION:** Paint

**DIMENSIONS:** N/A

**MANUFACTURER:** Sherwin Williams

**PRODUCT LINE:** High Reflective White

**FINISH/COLOR:** Flat

**FABRIC:** Merci Lena white

**PATTERN:** N / A

**REPEAT:** N/A

**MATERIAL CONTENT:** 100% Polyester face

**RETAIL COST:**

**NET COST:**

**EXTENDED COST:**

**Image:**



**Fabric / Finish:**

**WEBSITE:** <https://www.sherwin-williams.com/homeowners/products/color-to-go?colorPartNumber=SW7757> **NOTES:**

*\*NET COST WAS CALCULATED BY TAKING 20% OFF RETAIL COST*



**PROJECT NUMBER:** IND2237C DESIGN STUDIO 3

**PROJECT NAME:** Covenant House

**PROJECT LOCATION:** Covenant House Office

**DESIGNER:** Skylar Greenberg

**TAG:** WC2

**QUANTITY:** N/A

**LOCATION:** East Multipurpose room

**MANUFACTURER INFORMATION:**

*LBI Boyd design resource  
2275 Auto center drive  
Glendora, CA 91740*

**DESCRIPTION:** Wallcovering

**DIMENSIONS:** 4'-6"

**MANUFACTURER:** LBI Boyd design resource

**PRODUCT LINE:** Corporate word wall

**FINISH/COLOR:** N/A

**Sustainability:** CDPH/CHPS 01350  
**Compliant, Greenguard, LEED compliant**  
**PATTERN:** N / A

**REPEAT:** N/A

**MATERIAL CONTENT:** 100% Polyester face

**RETAIL COST:**

**NET COST:**

**EXTENDED COST:**

**Image:**



**Fabric / Finish:**

**WEBSITE:** <https://www.materialbank.com/lbi-boyd-design-resource-corporate-word-wall-824410>

**NOTES:**

*\*NET COST WAS CALCULATED BY TAKING 20% OFF RETAIL COST*



**PROJECT NUMBER:** IND2237C DESIGN STUDIO 3

**PROJECT NAME:** Covenant House

**PROJECT LOCATION:** Covenant House Office

**DESIGNER:** Skylar Greenberg

**TAG:** PT2

**QUANTITY:** N/A

**LOCATION:** North, South, West Multi purpose room

**MANUFACTURER INFORMATION:**

*HBF*

*900 12th ST Dr NW*

*Hickory, NC 28601*

**DESCRIPTION:** Stone

**DIMENSIONS:** N/A

**MANUFACTURER:** Sherwin Williams

**PRODUCT LINE:** Jersey Cream

**FINISH/COLOR:** Flat

**Sustainability:** N/A

**PATTERN:** N / A

**REPEAT:** N/A

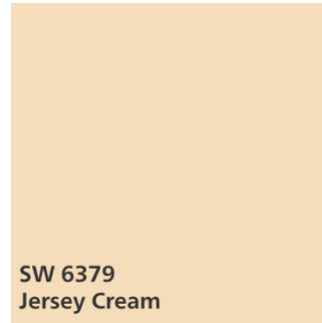
**MATERIAL CONTENT:** 100% Polyester face

**RETAIL COST:**

**NET COST:**

**EXTENDED COST:**

**Image:**



**Fabric / Finish:**

**WEBSITE:** <https://www.sherwin-williams.com/homeowners/products/color-to-go?colorPartNumber=SW6379> **NOTES:**

*\*NET COST WAS CALCULATED BY TAKING 20% OFF RETAIL COST*



**PROJECT NUMBER:** IND2237C DESIGN STUDIO 3

**PROJECT NAME:** Covenant House

**PROJECT LOCATION:** Covenant House Office

**DESIGNER:** Skylar Greenberg

**TAG:** ST1

**QUANTITY:** N/A

**LOCATION:** Men's restroom

**MANUFACTURER INFORMATION:**

*HBF*

*900 12th ST Dr NW*

*Hickory, NC 28601*

**DESCRIPTION:** Stone

**DIMENSIONS:** 12-3/4" X 13-17/16" X 3/8"

**MANUFACTURER:** Artistic Tile

**PRODUCT LINE:** Tappeti Blue Blend Mosaic

**FINISH/COLOR:** Polished

**FABRIC:** N/A

**PATTERN:** N / A

**REPEAT:** N/A

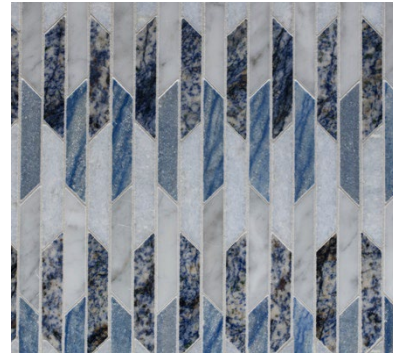
**MATERIAL CONTENT:** 100% Polyester face

**RETAIL COST:**

**NET COST:**

**EXTENDED COST:**

**Image:**



**Fabric / Finish:**

**WEBSITE:** <https://www.artistictile.com/products/tappeti-stappetimosaic> **NOTES:**

*\*NET COST WAS CALCULATED BY TAKING 20% OFF RETAIL COST*



**PROJECT NUMBER:** IND2237C DESIGN STUDIO 3

**PROJECT NAME:** Covenant House

**PROJECT LOCATION:** Covenant House Office

**DESIGNER:** Skylar Greenberg

**TAG:** PRT1

**QUANTITY:** N/A

**LOCATION:** Women's restroom

**MANUFACTURER INFORMATION:**

*Tile Bar  
15 Hoover St  
Inwood, NY 11096*

**DESCRIPTION:** Porcelain tile

**DIMENSIONS:** 23.62" X 47.24"

**MANUFACTURER:** Tile Bar

**PRODUCT LINE:** Monet Fancy wall Pink  
and green artisan décor porcelain wall tile

**FINISH/COLOR:** Matte

**FABRIC:** N/A

**PATTERN:** N / A

**REPEAT:** N/A

**MATERIAL CONTENT:** 100% Polyester face

**RETAIL COST:**

**NET COST:**

**EXTENDED COST:**

**Image:**



**Fabric / Finish:**

**WEBSITE:** <https://www.tilebar.com/monet-fancy-wall-pink-and-green-24x48-artisan-decor-matte-porcelain-wall-tile.html> **NOTES:**

*\*NET COST WAS CALCULATED BY TAKING 20% OFF RETAIL COST*





**PROJECT NUMBER:** IND2237C DESIGN STUDIO 3

**PROJECT NAME:** Covenant House

**PROJECT LOCATION:** Covenant House Office

**DESIGNER:** Skylar Greenberg

**TAG:** WC3

**QUANTITY:** N/A

**LOCATION:** Right Hallway (accent wall near women's restroom)

**MANUFACTURER INFORMATION:**

*HBF*

*900 12th ST Dr NW*

*Hickory, NC 28601*

**DESCRIPTION:** Wallcovering

**DIMENSIONS:** 20.5" x 118.1"

**MANUFACTURER:** Mind The Gap

**PRODUCT LINE:** Summer of 69' wallpaper

**FINISH/COLOR:** Satin Matte

**FABRIC:**

**PATTERN:** N / A

**REPEAT:** N/A

**MATERIAL CONTENT:** 100% Polyester face

**RETAIL COST:**

**NET COST:**

**EXTENDED COST:**

**Image:**



**Fabric / Finish:**

**WEBSITE:** <https://www.2modern.com/products/summer-of-69-wallpaper> **NOTES:**

*\*NET COST WAS CALCULATED BY TAKING 20% OFF RETAIL COST*



**PROJECT NUMBER:** IND2237C DESIGN STUDIO 3

**PROJECT NAME:** Covenant House

**PROJECT LOCATION:** Covenant House Office

**DESIGNER:** Skylar Greenberg

**TAG:** WC4

**QUANTITY:** N/A

**LOCATION:** Team Area south and west side of wall

**MANUFACTURER INFORMATION:**

*HBF*

*900 12th ST Dr NW*

*Hickory, NC 28601*

**DESCRIPTION:** Wallcovering

**DIMENSIONS:** 21" W x 11 yards L

**MANUFACTURER:** Caselio

**PRODUCT LINE:** Labyrinth Doors

**FINISH/COLOR:** Smooth

**FABRIC:** N/A

**PATTERN:** N / A

**REPEAT:** N/A

**MATERIAL CONTENT:** 100% Polyester face

**RETAIL COST:**

**NET COST:**

**EXTENDED COST:**

**Image:**



**Fabric / Finish:**

**WEBSITE:** <https://www.caselio.com/en/catalog/product/view/id/26376/s/labyrinth-doors-LBY102087026/>

**NOTES:**

*\*NET COST WAS CALCULATED BY TAKING 20% OFF RETAIL COST*



**PROJECT NUMBER:** IND2237C DESIGN STUDIO 3

**PROJECT NAME:** Covenant House

**PROJECT LOCATION:** Covenant House Office

**DESIGNER:** Skylar Greenberg

**TAG:** WC5

**QUANTITY:** N/A

**LOCATION:** Café North wall

**MANUFACTURER INFORMATION:**

*Gravity Digital Walls  
1743 W 6200N S Ste #1  
Taylorsville, UT 84129*

**DESCRIPTION:** Wallcovering

**DIMENSIONS:** 4'-6"

**MANUFACTURER:** Gravity Digital Walls

**PRODUCT LINE:** Pop art-window to the  
soul

**FINISH/COLOR:** Image lock protective coating,

UV matte coating

**FABRIC:**

**PATTERN:** N / A

**REPEAT:** N/A

**MATERIAL CONTENT:** 100% Polyester face

**RETAIL COST:**

**NET COST:**

**EXTENDED COST:**

**Image:**



**Fabric / Finish:**

**WEBSITE:** <https://www.gravitydigitalwalls.com/volume-3/pop-art-window-to-the-soul>

**NOTES:** CDPH/CHPS Compliant, Greenguard, LEED Compliant

*\*NET COST WAS CALCULATED BY TAKING 20% OFF RETAIL COST*



# FLOORING



**PROJECT NUMBER:** IND2237C DESIGN STUDIO 3

**PROJECT NAME:** Covenant House

**PROJECT LOCATION:** Covenant House Office

**DESIGNER:** Skylar Greenberg

**TAG:** PRT2

**QUANTITY:** N/A

**LOCATION:** All rooms besides bathrooms

**MANUFACTURER INFORMATION:**

*Tilebar*

*15 hoover st, Inwood, NY 11096*

*Hickory, NC 28601*

**DESCRIPTION:** Porcelain Tile

**DIMENSIONS:** 24" x 24"

**MANUFACTURER:** Tilebar

**PRODUCT LINE:** Fordham Bianco

**FINISH/COLOR:** Matte

**FABRIC:** N/A

**PATTERN:** N / A

**REPEAT:** N/A

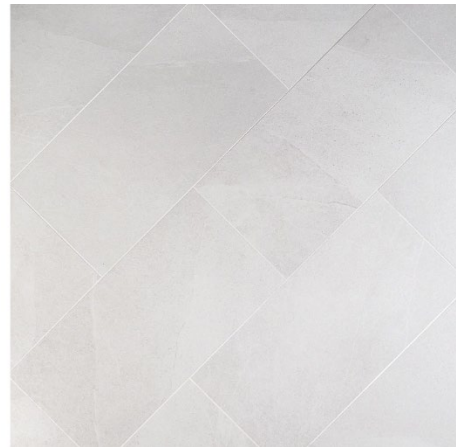
**MATERIAL CONTENT:** N/A

**RETAIL COST:**

**NET COST:**

**EXTENDED COST:**

**Image:**



**Fabric / Finish:**

**WEBSITE:** <https://www.tilebar.com/fordham-bianco-12x24-matte-porcelain-tile.html>

**NOTES:**

*\*NET COST WAS CALCULATED BY TAKING 20% OFF RETAIL COST*



**PROJECT NUMBER:** IND2237C DESIGN STUDIO 3

**PROJECT NAME:** Covenant House

**PROJECT LOCATION:** Covenant House Office

**DESIGNER:** Skylar Greenberg

**TAG:** PRT3

**QUANTITY:** 18

**LOCATION:** Men's Bathroom

**MANUFACTURER INFORMATION:**  
1459 Rt 23 South  
Wayne, New Jersey 07470  
United States

**DESCRIPTION:** Porcelain Tile

**DIMENSIONS:** 24" x 48"

**MANUFACTURER:** Wayne Tile

**PRODUCT LINE:** Shiny Sky

**FINISH/COLOR:** Polished

**FABRIC:** N/A

**PATTERN:** N / A

**REPEAT:** N/A

**MATERIAL CONTENT:**

**RETAIL COST:**

**NET COST:**

**EXTENDED COST:**

**Image:**



**Fabric / Finish:**

**WEBSITE:** <https://waynetile.com/collections/divine/>

**NOTES:** LEED Compliant

*\*NET COST WAS CALCULATED BY TAKING 20% OFF RETAIL COST*



**PROJECT NUMBER:** IND2237C DESIGN STUDIO 3

**PROJECT NAME:** Covenant House

**PROJECT LOCATION:** Covenant House Office

**DESIGNER:** Skylar Greenberg

**TAG:** CT1

**QUANTITY:** N/A

**LOCATION:** Womens Bathrooms

**MANUFACTURER INFORMATION:**

Florida Tile  
998 Governors Lane Suite 250  
Lexington, KY 40513

**DESCRIPTION:** Ceramic Tile

**DIMENSIONS:** 12" x 24"

**MANUFACTURER:** Florida Tile

**PRODUCT LINE:** Brecca Mist

**FINISH/COLOR:** Glossy

**FABRIC:** N/A

**PATTERN:** N / A

**REPEAT:** N/A

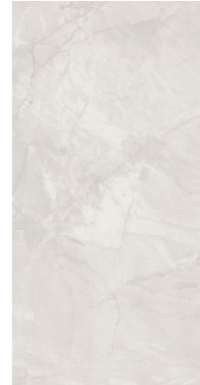
**MATERIAL CONTENT:**

**RETAIL COST:**

**NET COST:**

**EXTENDED COST:**

**Image:**



**Fabric / Finish:**

**WEBSITE:** <https://www.floridatile.com/products/ainslee-park/>

**NOTES:** LEED Compliant, ASTM E84, Green Guard certified

*\*NET COST WAS CALCULATED BY TAKING 20% OFF RETAIL COST*



# CEILING





**PROJECT NUMBER:** IND2237C DESIGN STUDIO 3

**PROJECT NAME:** Covenant House

**PROJECT LOCATION:** Covenant House Office

**DESIGNER:** Skylar Greenberg

**TAG:** WDP1

**QUANTITY:** N/A

**LOCATION:** Reception, Back hallway

**MANUFACTURER INFORMATION:**

Armstrong ceilings

2500 Columbia Ave

Lancaster, PA 17603

**DESCRIPTION:** Wood Plank

**DIMENSIONS:** 12" X 96"

**MANUFACTURER:** Armstrong Ceilings

**PRODUCT LINE:** Wood Works Grille-

classics solid ceiling panel

**FINISH/COLOR:** Ultra Violet Tinted Semi-gloss

coating

**FABRIC:** N/A

**PATTERN:** N / A

**REPEAT:** N/A

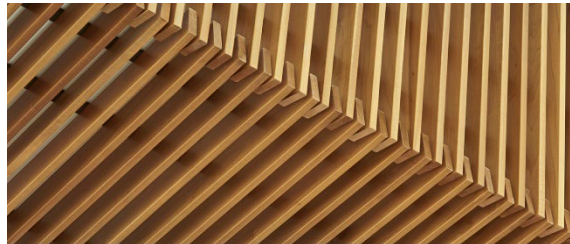
**MATERIAL CONTENT:**

**RETAIL COST:**

**NET COST:**

**EXTENDED COST:**

**Image:**



**Fabric / Finish:**

WEBSITE: <https://www.armstrongceilings.com/commercial/en/commercial-ceilings-walls/woodworks-grille-classics-ceiling-tiles.html>

NOTES:

*\*NET COST WAS CALCULATED BY TAKING 20% OFF RETAIL COST*



**PROJECT NUMBER:** IND2237C DESIGN STUDIO 3

**PROJECT NAME:** Covenant House

**PROJECT LOCATION:** Covenant House Office

**DESIGNER:** Skylar Greenberg

**TAG:** ACT 1

**QUANTITY:** N/A

**LOCATION:** Reception

**MANUFACTURER INFORMATION:**

2500 Columbia Ave

Lancaster, PA 17603

**DESCRIPTION:** Acoustical Ceiling tiles

**DIMENSIONS:** 48" X 72"

**MANUFACTURER:** Armstrong ceilings

**PRODUCT LINE:** ACOUSTICBUILT SEAMLESS

ACOUSTICAL CEILING SYSTEM

**FINISH/COLOR:** Fine Texture

**FABRIC:** Anodised PAT32

**PATTERN:** N / A

**REPEAT:** N/A

**MATERIAL CONTENT:**

**RETAIL COST:**

**NET COST:**

**EXTENDED COST:**

**Image:**



**Finish:**

**Fabric /**

WEBSITE: <https://www.armstrongceilings.com/commercial/en/commercial-ceilings-walls/acoustibuilt-ceiling-panels.html>

NOTES: Sustrainability: Greenguard, Voc

*\*NET COST WAS CALCULATED BY TAKING 20% OFF RETAIL COST*



**PROJECT NUMBER:** IND2237C DESIGN STUDIO 3

**PROJECT NAME:** Covenant House

**PROJECT LOCATION:** Covenant House Office

**DESIGNER:** Skylar Greenberg

**TAG:** ACT 2

**QUANTITY:** N/A

**LOCATION:** Multi Purpose Room, executive offices

**MANUFACTURER INFORMATION:**

Armstrong ceilings

2500 Columbia Ave

Lancaster, PA 17603

**DESCRIPTION:** Acoustical ceiling tiles

**DIMENSIONS:** 30" X 60"

**MANUFACTURER:** Armstrong ceilings

**PRODUCT LINE:** Techzone with lyra pb field

panels

**FINISH/COLOR:** Factory Applied vinyl latex paint on

woven, glass cloth scrim

**FABRIC:** N/A

**PATTERN:** N / A

**REPEAT:** N/A

**MATERIAL CONTENT:**

**RETAIL COST:**

**NET COST:**

**EXTENDED COST:**

**Image:**



**Finish:**

**Fabric /**

**WEBSITE:** <https://www.armstrongceilings.com/commercial/en/commercial-ceilings-walls/techzone-lyra-technical-ceiling-panels.html>

**NOTES:**

*\*NET COST WAS CALCULATED BY TAKING 20% OFF RETAIL COST*



**PROJECT NUMBER:** IND2237C DESIGN STUDIO 3

**PROJECT NAME:** Covenant House

**PROJECT LOCATION:** Covenant House Office

**DESIGNER:** Skylar Greenberg

**TAG:** GWB 1

**QUANTITY:** N/A

**LOCATION:** General Offices

**MANUFACTURER INFORMATION:**

Armstrong ceilings

2500 Columbia Ave

Lancaster, PA 17603

**DESCRIPTION:** Gymsum Wallboard

**DIMENSIONS:** 24" x 24"

**MANUFACTURER:** Armstrong Ceiling

**PRODUCT LINE:** Castwork metaphor ceiling

panels

**FINISH/COLOR:**

**FABRIC:** Anodised PAT32

**PATTERN:** N / A

**REPEAT:** N/A

**MATERIAL CONTENT:**

**RETAIL COST:**

**NET COST:**

**EXTENDED COST:**

**Image:**



**Finish:**

**Fabric /**

**WEBSITE:** <https://www.armstrongceilings.com/commercial/en/commercial-ceilings-walls/castworks-metaphors-ceiling-panels.html>

**NOTES:**

*\*NET COST WAS CALCULATED BY TAKING 20% OFF RETAIL COST*



**PROJECT NUMBER:** IND2237C DESIGN STUDIO 3

**PROJECT NAME:** Covenant House

**PROJECT LOCATION:** Covenant House Office

**DESIGNER:** Skylar Greenberg

**TAG:** WDP2

**QUANTITY:** N/A

**LOCATION:** Team Area

**MANUFACTURER INFORMATION:**

Armstrong ceilings

2500 Columbia Ave

Lancaster, PA 17603

**DESCRIPTION:** Wood Plank

**DIMENSIONS:** 24 1/2" W x 23" D x 30.25" H

**MANUFACTURER:** Armstrong ceiling

**PRODUCT LINE:** Woodworks linear veneered

open

**FINISH/COLOR:** Ultra violet clear semigloss

coating

**FABRIC:** N/A

**PATTERN:** N / A

**REPEAT:** N/A

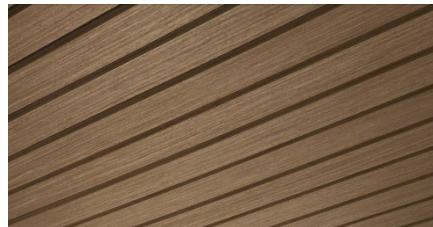
**MATERIAL CONTENT:**

**RETAIL COST:**

**NET COST:**

**EXTENDED COST:**

**Image:**



**/ Finish:**

**Fabric**

**WEBSITE:** <https://www.armstrongceilings.com/commercial/en/commercial-ceilings-walls/woodworks-linear-veneered-open.html>

**NOTES:** Sustainability: EPD, Biobased materials regionals materials sourcing of raw materials  
Leed

*\*NET COST WAS CALCULATED BY TAKING 20% OFF RETAIL COST*



**PROJECT NUMBER:** IND2237C DESIGN STUDIO 3

**PROJECT NAME:** Covenant House

**PROJECT LOCATION:** Covenant House Office

**DESIGNER:** Skylar Greenberg

**TAG:** ACT3

**QUANTITY:** 18

**LOCATION:** Cafe

**MANUFACTURER INFORMATION:**

Armstrong ceilings

2500 Columbia Ave

Lancaster, PA 17603

**DESCRIPTION:** Acoustical Ceiling Tiles

**DIMENSIONS:** 40" x 40"

**MANUFACTURER:** Armstrong ceiling tiles

**PRODUCT LINE:** Designflex shapes-pattern

**FINISH/COLOR:** N/A

**FABRIC:** N/A

**PATTERN:** N / A

**REPEAT:** N/A

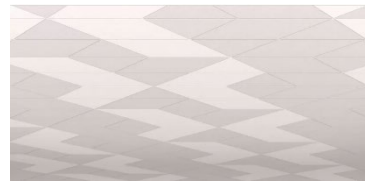
**MATERIAL CONTENT:**

**RETAIL COST:**

**NET COST:**

**EXTENDED COST:**

**Image:**



**Fabric / Finish:**

**WEBSITE:** <https://www.armstrongceilings.com/commercial/en/photos-videos/pattern-gallery/gallery/11.html>

**NOTES:**

*\*NET COST WAS CALCULATED BY TAKING 20% OFF RETAIL COST*



**PROJECT NUMBER:** IND2237C DESIGN STUDIO 3

**PROJECT NAME:** Covenant House

**PROJECT LOCATION:** Covenant House Office

**DESIGNER:** Skylar Greenberg

**TAG:** WDP3

**QUANTITY:** N/A

**LOCATION:** Conference Room

**MANUFACTURER INFORMATION:**

Armstrong ceilings  
2500 Columbia Ave  
Lancaster, PA 17603

**DESCRIPTION:** Wood Plank

**DIMENSIONS:** 24 1/2" W x 23" D x 30.25" H

**MANUFACTURER:** Armstrong ceiling

**PRODUCT LINE:** woodworks grille fore

solid ceiling panel

**FINISH/COLOR:** Ultra violet tinted semi gloss

**FABRIC:** N/A

**PATTERN:** N / A

**REPEAT:** N/A

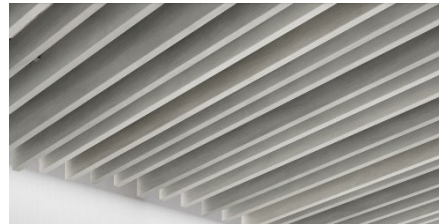
**MATERIAL CONTENT:**

**RETAIL COST:**

**NET COST:**

**EXTENDED COST:**

**Image:**



**Fabric / Finish:**

**WEBSITE:** <https://www.armstrongceilings.com/commercial/en/commercial-ceilings-walls/woodworks-grille-forte-ceiling-panels.html>

**NOTES:**

*\*NET COST WAS CALCULATED BY TAKING 20% OFF RETAIL COST*



# LIGHTING





**PROJECT NUMBER:** IND2237C DESIGN STUDIO 3

**PROJECT NAME:** Covenant House

**PROJECT LOCATION:** Covenant House Office

**DESIGNER:** Skylar Greenberg

**TAG:** L-1

**QUANTITY:** 24

**LOCATION:** Hallway

**MANUFACTURER INFORMATION:**

*Alcon Lighting, Inc.  
2845 S. Robertson Blvd.  
Los Angeles, CA 90034*

**DESCRIPTION:** 3 inch white LED recessed light fixture

**DIMENSIONS:** 7-1/8" mounting light

**MANUFACTURER:** Alcon Lighting

**PRODUCT LINE:** 1403121930K45EM

**FINISH/COLOR:** White

**FABRIC:** Anodised PAT32

**PATTERN:** N / A

**REPEAT:** N/A

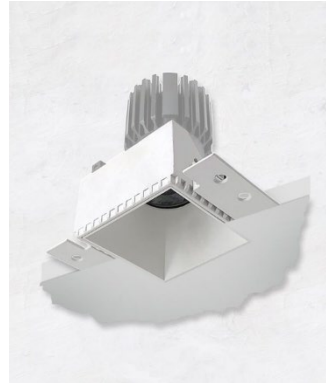
**MATERIAL CONTENT:**

**RETAIL COST:**

**NET COST:**

**EXTENDED COST:**

**Image:**



**Fabric / Finish:**

**WEBSITE:** <https://www.alconlighting.com/14143-3-inch-square-architectural-led-trimless-recessed-light-fixture.html>

**NOTES:**

*\*NET COST WAS CALCULATED BY TAKING 20% OFF RETAIL COST*



**PROJECT NUMBER:** IND2237C DESIGN STUDIO 3

**PROJECT NAME:** Covenant House

**PROJECT LOCATION:** Covenant House Office

**DESIGNER:** Skylar Greenberg

**TAG:** L-2

**QUANTITY:** 54

**LOCATION:** Hallway, reception, general offices,  
restrooms, workroom

**MANUFACTURER INFORMATION:**  
1121 Hwy 74 st PeachTree, GA 30269

**DESCRIPTION:** 6 inch led lens downlight

**DIMENSIONS:** 5/8 "mounting height

**MANUFACTURER:** Cooper Lighting

**PRODUCT LINE:** HLBSL6

**FINISH/COLOR:** White

**FABRIC:** N/A

**PATTERN:** N / A

**REPEAT:** N/A

**MATERIAL CONTENT:**

**RETAIL COST:**

**NET COST:**

**EXTENDED COST:**

**Image:**



**Fabric / Finish:**

**WEBSITE:** <https://www.cooperlighting.com/global/brands/halo-commercial/1026053/hc6-led-6-downlight-series>  
**NOTES:**

*\*NET COST WAS CALCULATED BY TAKING 20% OFF RETAIL COST*



**PROJECT NUMBER:** IND2237C DESIGN STUDIO 3

**PROJECT NAME:** Covenant House

**PROJECT LOCATION:** Covenant House Office

**DESIGNER:** Skylar Greenberg

**TAG:** L-3

**QUANTITY:** 24

**LOCATION:** Team Area, Reception, Hallway

**MANUFACTURER INFORMATION:**  
1121 Hwy 74 st PeachTree, GA 30269

**DESCRIPTION:** FSN6 Fail-safe sealed narrow 6"

**DIMENSIONS:** 5/16 " mounting height

**MANUFACTURER:** Cooper Lighting

**PRODUCT LINE:** 2FSN6-50D-CP125-L840-

**HDC**

**FINISH/COLOR:** White

**FABRIC:** Anodised PAT32

**PATTERN:** N / A

**REPEAT:** N/A

**MATERIAL CONTENT:**

**RETAIL COST:**

**NET COST:**

**EXTENDED COST:**

**Image:**



**Fabric / Finish:**

**WEBSITE:**

<https://www.cooperlighting.com/api/assets/v1/file/CLS/content/cd139fabb0ee48b1ae3dad41007927f6/Fail-Safe-FSN-spec-sheet.PDF>

**NOTES:** FSN SEALED NARROW RECESSED / 50D / 125

*\*NET COST WAS CALCULATED BY TAKING 20% OFF RETAIL COST*



**PROJECT NUMBER:** IND2237C DESIGN STUDIO 3

**PROJECT NAME:** Covenant House

**PROJECT LOCATION:** Covenant House Office

**DESIGNER:** Skylar Greenberg

**TAG:** L-4

**QUANTITY:** 17

**LOCATION:** Café and Multi purpose room

**MANUFACTURER INFORMATION:**

*ERG INTERNATIONAL*

*361 North Bernoulli Circle,*

*Oxnard, California 93030*

*(805) 981.9978*

*Sales@erginternational.com*

**DESCRIPTION:** Linear Florecent

**DIMENSIONS:** 24 1/2" W x 23" D x 30.25" H

**MANUFACTURER:** TCP

**PRODUCT LINE:** HFP4U

**FINISH/COLOR:** Gold Coast Charlotte & Mario

**FABRIC:** Anodised PAT32

**PATTERN:** N / A

**REPEAT:** N/A

**MATERIAL CONTENT:**

**RETAIL COST:**

**NET COST:**

**EXTENDED COST:**

**Image:**



**Fabric / Finish:**

**WEBSITE:** <https://www.tcpi.com/product/hbl44lt8b1-hb-led-t8-rdy-4ft-4l-se/>

**NOTES:** Flat Panel surface mount/ 6000 Lumens / 4100K

*\*NET COST WAS CALCULATED BY TAKING 20% OFF RETAIL COST*



**PROJECT NUMBER:** IND2237C DESIGN STUDIO 3

**PROJECT NAME:** Covenant House

**PROJECT LOCATION:** Covenant House Office

**DESIGNER:** Skylar Greenberg

**TAG:** L-5

**QUANTITY:** 1

**LOCATION:** Reception

**MANUFACTURER INFORMATION:**  
22400 Nw Lake Dr, Houston, TX

*Visual Comfort and Co.*

**DESCRIPTION:** Chandelier

**DIMENSIONS:** 53.4" mounting height

**MANUFACTURER:** Visual Comfort and Co.

**PRODUCT LINE:** Mara Grande Chandelier

**FINISH/COLOR:** Aged Brass

**FABRIC:** Anodised PAT32

**PATTERN:** N / A

**REPEAT:** N/A

**MATERIAL CONTENT:**

**RETAIL COST:**

**NET COST:**

**EXTENDED COST:**

**Image:**



**Fabric / Finish:**

**WEBSITE:** [https://www.visualcomfort.com/mara-grande-chandelier-700mrag/?gad\\_source=1&gclid=CjwKCAiAmZGrBhAnEiwAo9gHiVG\\_PwAPpxC8KQJtv2sZCzCteRRYAsMaNmSyDYeQ-EAINpYuo-CpBxoCR4cQAvD\\_BwE#2461=35651&1701=8571&1661=9201](https://www.visualcomfort.com/mara-grande-chandelier-700mrag/?gad_source=1&gclid=CjwKCAiAmZGrBhAnEiwAo9gHiVG_PwAPpxC8KQJtv2sZCzCteRRYAsMaNmSyDYeQ-EAINpYuo-CpBxoCR4cQAvD_BwE#2461=35651&1701=8571&1661=9201)

**NOTES:** LED 90 CRI 2700K 1 20V

*\*NET COST WAS CALCULATED BY TAKING 20% OFF RETAIL COST*



**PROJECT NUMBER:** IND2237C DESIGN STUDIO 3

**PROJECT NAME:** Covenant House

**PROJECT LOCATION:** Covenant House Office

**DESIGNER:** Skylar Greenberg

**TAG:** L-6

**QUANTITY:** 3

**LOCATION:** Café

**MANUFACTURER INFORMATION:**  
22400 Nw Lake Dr, Houston, TX

*Visual Comfort and Co.*

**DESCRIPTION:** Pendant

**DIMENSIONS:** 42" mounting height

**MANUFACTURER:** Visual Comfort and Co.

**PRODUCT LINE:** Modern Rail pendant

**FINISH/COLOR:** Gold Coast Charlotte & Mario

**FABRIC:** Anodised PAT32

**PATTERN:** N / A

**REPEAT:** N/A

**MATERIAL CONTENT:**

**RETAIL COST:**

**NET COST:**

**EXTENDED COST:**

**Image:**



**Fabric / Finish:**

**WEBSITE** [https://www.visualcomfort.com/modernrail-pendant-700mdp3/?gad\\_source=1&gclid=CjwKCAiAmZGrBhAnEiwAo9qHiWs3w2RUk0RgxdbvzXHlt2nLDqfUVARC52k3KzBoM1C7TfB99FI2pxoCCKYQAvD\\_BwE#2461=35651&1701=10161&1661=9301](https://www.visualcomfort.com/modernrail-pendant-700mdp3/?gad_source=1&gclid=CjwKCAiAmZGrBhAnEiwAo9qHiWs3w2RUk0RgxdbvzXHlt2nLDqfUVARC52k3KzBoM1C7TfB99FI2pxoCCKYQAvD_BwE#2461=35651&1701=10161&1661=9301)

**NOTES:** 24v Remote Canopy

*\*NET COST WAS CALCULATED BY TAKING 20% OFF RETAIL COST*